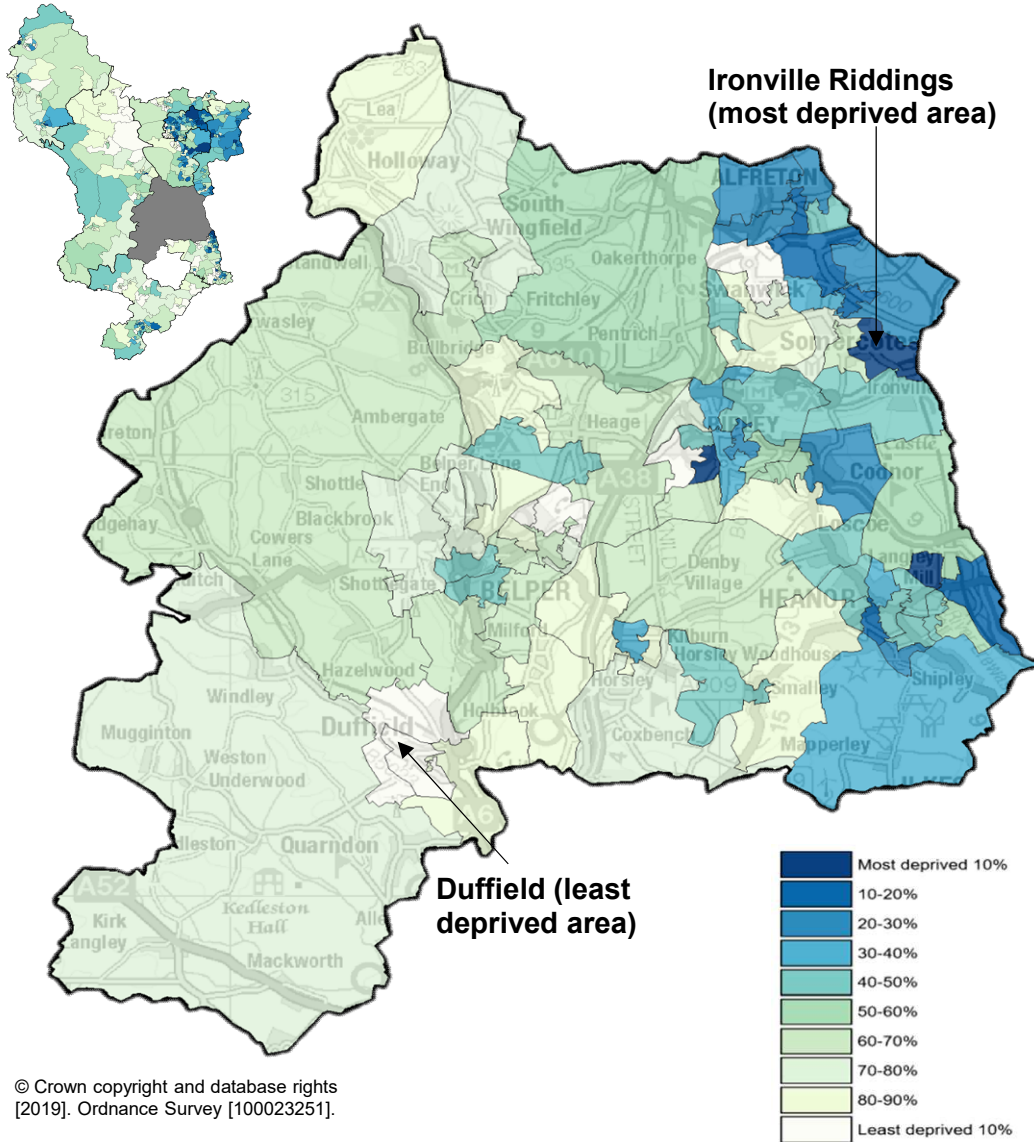


Deprivation in Amber Valley

Amber Valley district contains towns such as Alfreton, Ripley, Belper and Heanor. 16% of Derbyshire's population live here, which is approximately 126,000 people.



© Crown copyright and database rights [2019]. Ordnance Survey [100023251].

Derbyshire's **3rd** most deprived district. Ranked 167 of 316 local authority districts.

3 of 78 areas are in the most deprived 10% nationally, and **8** in the most deprived 20%.

Worst ranked areas in Amber Valley:

- 1 - Ironville Riddings
- 2 - Ripley
- 3 - Langlely Mill

Areas of concern: (worsened since 2015)

- Horsley Woodhouse
- Heage
- Somercotes

Deprivation by domain in Amber Valley (areas in most deprived 20% nationally)

