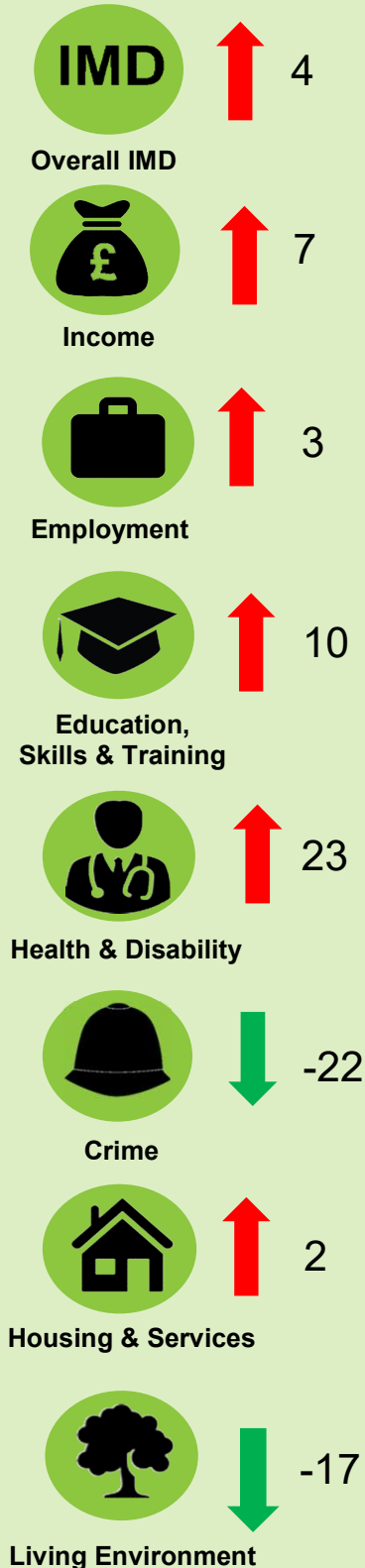


How deprivation has changed in Derbyshire from 2015 to 2019

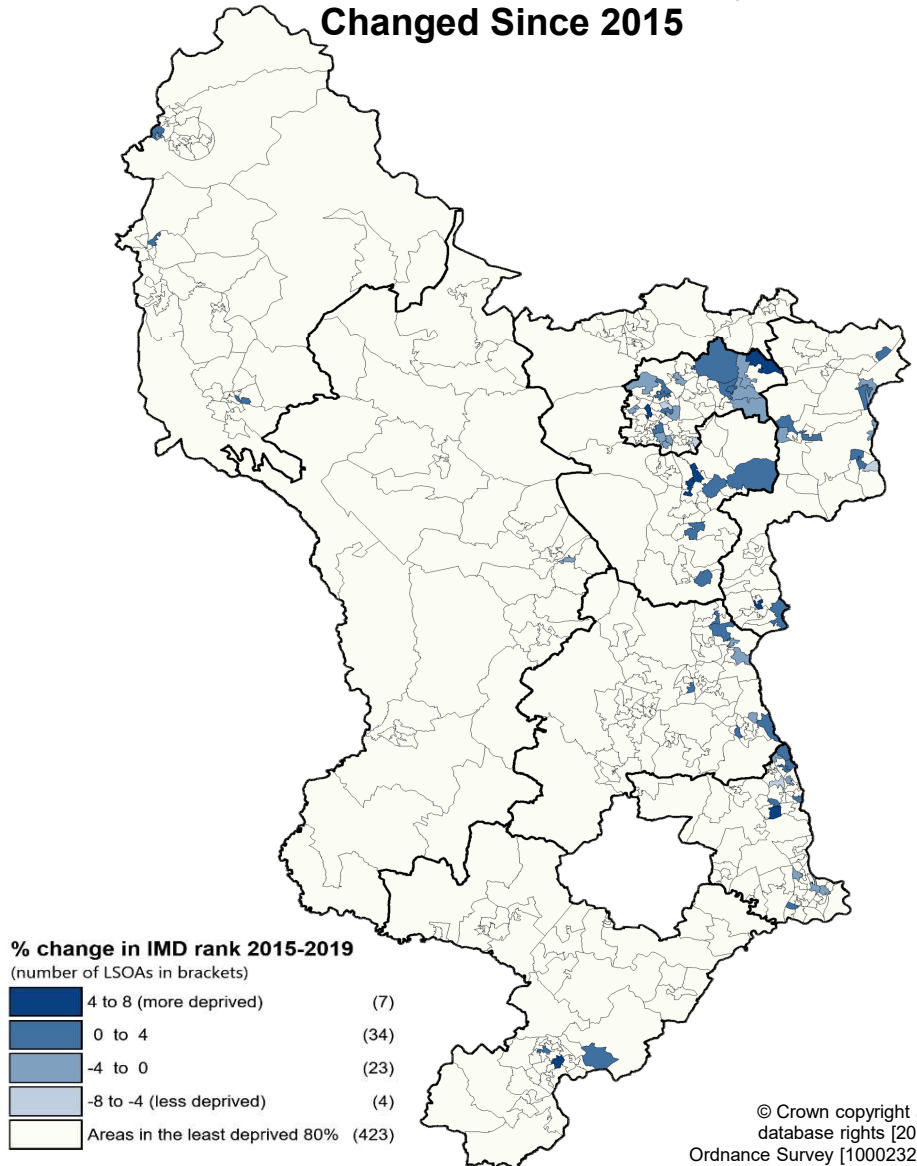
The English Indices of Multiple Deprivation (IMD) data is released approximately every four years, allowing changes in deprivation to be tracked over time in Derbyshire.

Deprivation by Domain

Net change in number of areas in most deprived 20% since 2015



How the Most Deprived Areas in Derbyshire have Changed Since 2015



Cotmanhay has remained the most deprived area in Derbyshire, while **Duffield** is now the least deprived.

Derbyshire as an authority has improved from **100/152** authorities, to **103/151** authorities.

Key Changes

Erewash district has improved the most, up 19 positions nationally, while **North East Derbyshire** has fallen by 13 positions.

The **Crime Domain** has 22 fewer deprived areas, but the **Health and Disability Domain** has 23 new deprived areas.