

Derbyshire's Projected Change in Households: 2018 - 2043

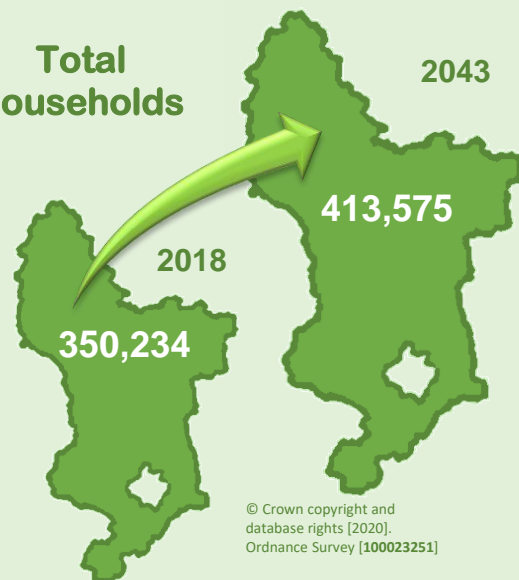


By 2043 the number of households is expected to increase by a further **63,300 (18.1%)**



In 2018 the number of households had increased by **18,600** since 2011 (5.6%)

Total households



Derbyshire households with dependent children will fall from 25% in 2018 to 23% in 2043



Increase in Total Households 2018 - 2043



Derbyshire



England



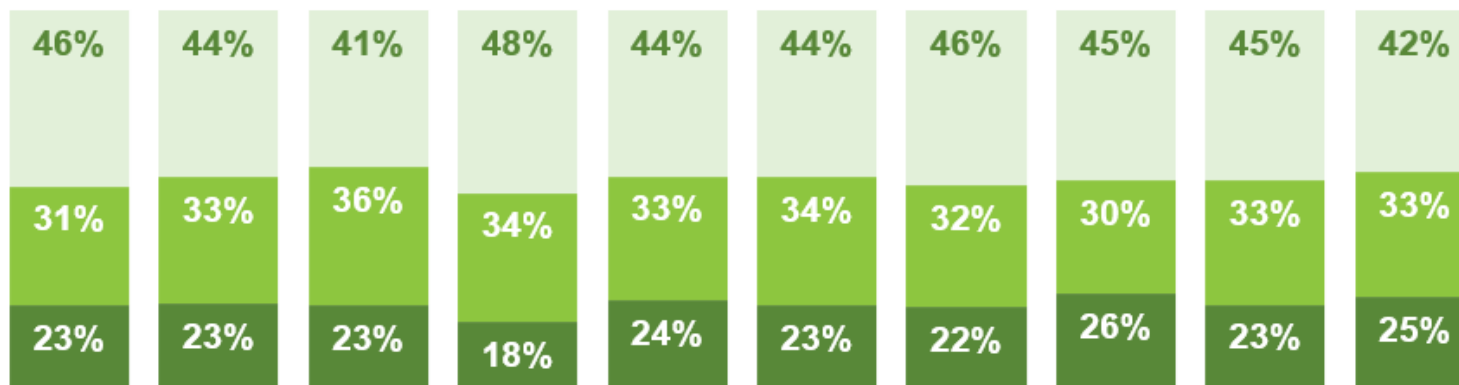
Derbyshire households with lone adults will rise from 30% in 2018 to 33% in 2043



Derbyshire's average household size will fall from...



2043 Household Types



■ With dependent children ■ Lone person ■ Other household