

Castleton

Area type and code
Parish (E04002842)

Population

Population change since 2001

Change in numbers	% change		
	This Area	High Peak	Derbyshire
-7	-1.1	+1.6	+4.8

2011 Census Table KS101EW and 2001 Census Table S001

Residents

	Number
Total resident population	642
- in households	635
- in communal establishments	7

Table KS101EW

Density of population

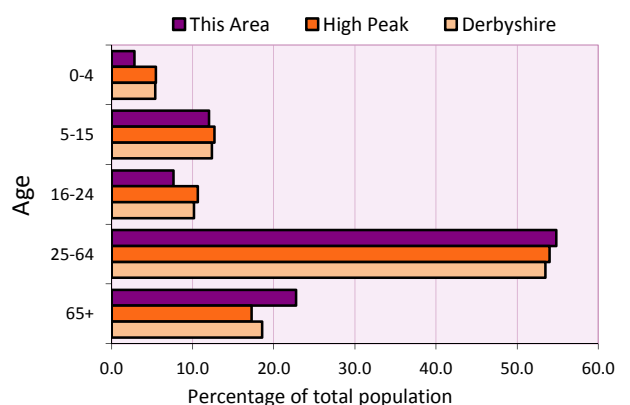
Area (hectares)	Persons per hectare		
	This Area	High Peak	Derbyshire
1,177	0.6	1.7	3.0

Table KS101EW

Age structure	Number of people	% of total population		
		This Area	High Peak	Derbyshire
0-4 years	18	2.8	5.5	5.4
5-15 years	77	12.0	12.7	12.4
16-24 years	49	7.6	10.6	10.2
25-64 years	352	54.8	54.0	53.5
65 and over	146	22.7	17.2	18.6

Table KS102EW

Age structure of the population



Households

Total households

Number	Average household size (persons)		
	This Area	High Peak	Derbyshire
295	2.18	2.33	2.31

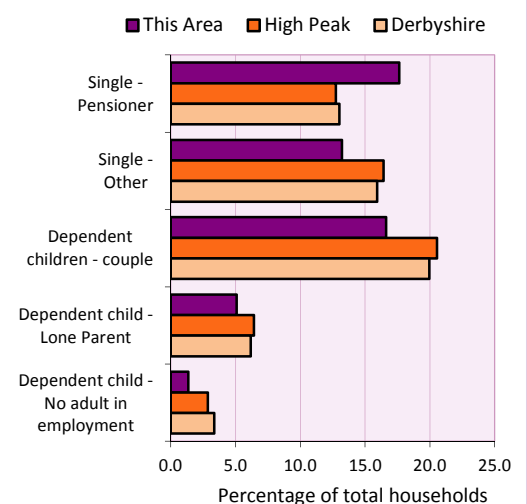
Table KS101EW and KS403EW

Household types

Number	% of total households			
	This Area	High Peak	Derbyshire	
Single person households	91	30.8	29.2	28.9
Pensioner	52	17.6	12.7	13.0
Other	39	13.2	16.4	15.9
Households with dependent children				
All	65	22.0	28.4	27.6
Couple	49	16.6	20.5	19.9
Lone parent	15	5.1	6.4	6.2
No adult in employment	4	1.4	2.9	3.4
One person with a long-term health problem - or disability	11	3.7	4.4	4.5

Table KS105EW and KS106EW

Household types



Car/van ownership

Number of households	% of total households			
	This Area	High Peak	Derbyshire	
No car or van	39	13.2	19.6	20.1

Table KS404EW

2011 Census: Summary Profile

Castleton

Area type and code
Parish (E04002842)

Accommodation

Tenure	Number of households	% of total households		
		This Area	High Peak	Derbyshire
Owner-occupied	219	74.2	72.6	71.4
Rented from council/housing association	39	13.2	12.7	15.3
Private/other rented	31	10.5	13.4	12.0
Living rent free	6	2.0	1.2	1.3

Table KS402EW

Amenities	Number of households	% of total households		
		This Area	High Peak	Derbyshire
Overcrowded households	12	4.1	4.8	3.7
Households without central heating	5	1.7	2.3	2.0

Table KS403EW

Total household spaces	346
-------------------------------	------------

Table KS401EW

Type of accommodation	Number of household spaces	% of total household spaces		
		This Area	High Peak	Derbyshire
Detached	103	29.8	23.5	31.8
Semi-detached	129	37.3	29.2	38.7
Terraced	90	26.0	34.4	20.6
Flat/maisonette/apartment	23	6.6	12.6	8.6
Other	1	0.3	0.2	0.3

Table KS401EW

Marital status

Marital status	Number of people	% of people aged 16+		
		This Area	High Peak	Derbyshire
Single	138	25.2	30.9	29.3
Married	299	54.7	49.1	50.5
Same-sex civil partnership	4	0.7	0.2	0.2
Separated	6	1.1	2.4	2.4
Divorced	55	10.1	9.9	9.9
Widowed / surviving partner	45	8.2	7.4	7.7

Table KS103EW

Health

Health	Number of people	% of total population		
		This Area	High Peak	Derbyshire
People whose day-to-day activities are limited	97	15.1	18.1	20.4
People with 'bad' general health	22	3.4	5.2	6.2
People providing unpaid care	90	14.0	11.3	12.1

Table KS301EW

2011 Census: Summary Profile

Castleton

Area type and code
Parish (E04002842)

Ethnicity

Ethnic group	Number of people	% of total population		
		This Area	High Peak	Derbyshire
White British	616	96.0	95.9	95.8
Black and Minority Ethnic (BME)	26	4.0	4.1	4.2
White Other	14	2.2	2.0	1.7
Mixed/multiple ethnic groups	7	1.1	1.0	0.9
Asian/Asian British	2	0.3	0.8	1.1
Black/African/Caribbean/Black British	1	0.2	0.2	0.4
Other ethnic group	2	0.3	0.1	0.1

Table KS201EW

Religion

Religion	Number of people	% of total population		
		This Area	High Peak	Derbyshire
Christian	408	63.6	64.1	63.6
Buddhist	0	0.0	0.3	0.2
Hindu	2	0.3	0.1	0.2
Jewish	0	0.0	0.0	0.0
Muslim	1	0.2	0.2	0.3
Sikh	0	0.0	0.0	0.3
Other religions	4	0.6	0.4	0.4
No religion	172	26.8	27.6	28.0
Not stated	55	8.6	7.2	7.0

Table KS209EW

Migration

Country of birth by year of arrival in the UK	Number of people	% of total residents		
		This Area	High Peak	Derbyshire
From within the UK total	622	96.9	96.4	96.7
From outside the UK total	20	3.1	3.6	3.3
<i>of which</i>				
- Ireland	2	0.3	0.5	0.3
- Other EU country	5	0.8	0.8	0.9
- European (Non-EU country)	3	0.5	0.2	0.1
- Other parts of the world	10	1.6	1.7	1.6

Table LC2804EW

Length of residence in the UK	Number of people	% of total residents		
		This Area	High Peak	Derbyshire
Less than 2 years	3	0.5	0.2	0.3
2 years or more but less than 5 years	0	0.0	0.5	0.5
5 years or more but less than 10 years	0	0.0	0.6	0.6
10 years or more	17	2.6	2.2	2.0
Born in the UK	622	96.9	96.4	96.7

Table QS803EW

2011 Census: Summary Profile

Castleton

Area type and code
Parish (E04002842)

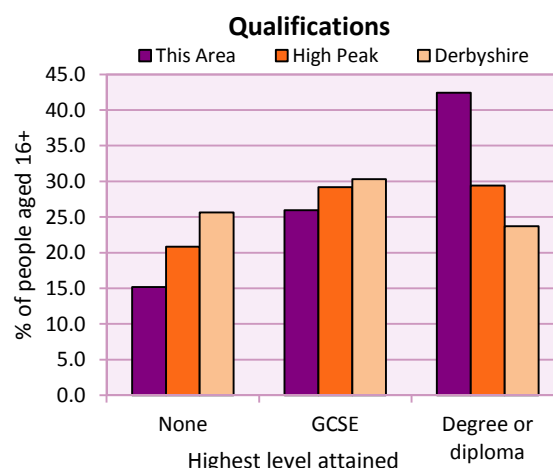
Education

Full-time students	Number	% of population in age group		
		This Area	High Peak	Derbyshire
aged 16-17	17	100.0	88.0	86.3
aged 18-74	14	3.0	3.9	2.9

Table KS501EW

Qualifications	People (aged 16+)	% of all people aged 16+		
		This Area	High Peak	Derbyshire
No qualifications	83	15.2	20.9	25.7
Highest level attained				
GCSE	142	26.0	29.2	30.3
Degree or diploma	232	42.4	29.4	23.7

Table KS501EW



Workforce

Economic activity	People aged 16-74								
	This Area			High Peak			Derbyshire		
	Males	Females	All	Males	Females	All	Males	Females	All
Economically active									
- number	175	173	348	25,645	22,915	48,560	211,349	185,704	397,053
- rate (%)	74.2	69.5	71.8	76.3	67.8	72.1	74.8	65.1	69.9
All unemployed									
- number	3	6	9	1,563	1,013	2,576	13,541	8,665	22,206
- rate (%)	1.3	2.4	1.9	4.7	3.0	3.8	4.8	3.0	3.9
Economically inactive									
- number	61	76	137	7,965	10,864	18,829	71,240	99,505	170,745
- rate (%)	25.8	30.5	28.2	23.7	32.2	27.9	25.2	34.9	30.1

Table KS601EW KS602EW and KS603EW

Hours worked	% of people aged 16-74 in employment					
	Full time (more than 30 hrs)			Part time (30 hrs or less)		
	This Area	High Peak	Derbyshire	This Area	High Peak	Derbyshire
All	65.7	70.0	70.3	34.3	30.0	29.7
Males	78.5	85.6	86.5	21.5	14.4	13.5
Females	52.4	52.8	52.1	47.6	47.2	47.9

Table KS604EW

People travelling to work	This Area	High Peak	Derbyshire
- works mainly at or from home %	14.7	12.2	10.5
- by car or van %	70.2	59.4	65.6
- by public transport or taxi %	4.3	8.4	6.6
- by all other methods of travel %	10.9	20.0	17.4
Average distance travelled km	21.2	15.7	15.2

Table LC7101EW and QS702EW

2011 Census: Summary Profile

Castleton

Area type and code
Parish (E04002842)

Workforce (continued)

Industry (people aged 16-74 in employment)	Number of workers	% of people aged 16-74 in employment		
		This Area	High Peak	Derbyshire
Agriculture, forestry and fishing	7	2.1	1.0	1.0
Mining, quarrying and utilities	2	0.6	2.0	1.9
Manufacturing	28	8.3	13.3	14.9
Construction	21	6.2	7.6	8.5
Wholesale and retail	44	13.0	14.4	16.6
Business services	121	35.8	27.4	25.1
Public services	91	26.9	29.6	27.5
Other services	24	7.1	4.7	4.5

Chart category

Other

Other

Manufacturing

Other

Services

Services

Services

Services

Table KS605EW

Occupation (people aged 16-74 in employment)	Number of workers	% of people aged 16-74 in employment		
		This Area	High Peak	Derbyshire
Managers, directors & senior officials	72	21.3	11.3	10.9
Professional	74	21.9	17.8	15.1
Associate professional & technical	38	11.2	11.7	11.0
Administrative & secretarial	32	9.5	10.1	10.9
Skilled trades	39	11.5	12.6	13.3
Caring, leisure & other services	22	6.5	10.0	9.6
Sales & customer service	11	3.3	7.0	7.9
Process, plant & machine operatives	15	4.4	9.0	9.6
Elementary occupations	35	10.4	10.4	11.7

Chart category

Managerial & professional

Managerial & professional

Managerial & professional

Other non-manual

Manual

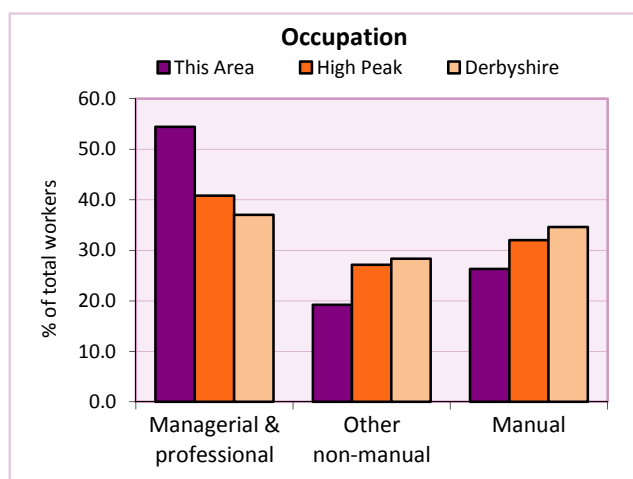
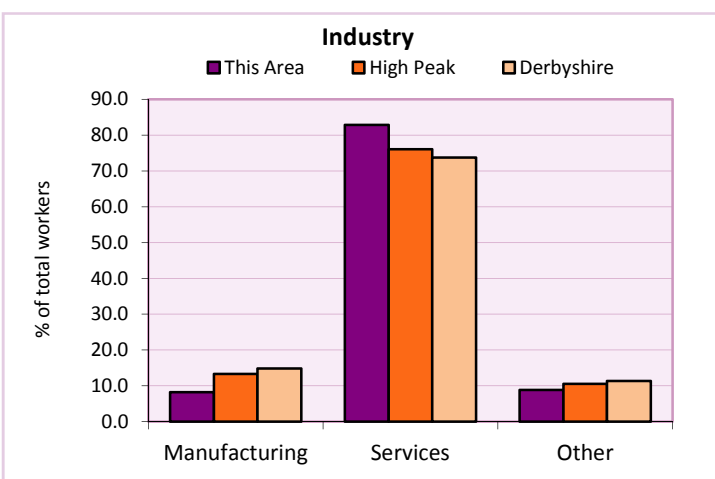
Other non-manual

Other non-manual

Manual

Manual

Table KS608EW



For an **explanation** of the various terms used in these tables, please see the accompanying **Glossary**.

Extension profiles covering the following topics in more detail will also be available:

Population, Economic Activity, Equalities, Health, Households, and Housing.

Profiles in Adobe Acrobat (pdf) format can be downloaded from the Derbyshire Observatory web site, which also provides interactive maps and charts - <http://observatory.derbyshire.gov.uk>

Please note that figures vary across the Census Profiles as different denominators are used. 2011 Census Table reference numbers are provided beneath each individual table in the Census Profiles should you require further information.

Version: 6.31