

## Chapel-en-le-Frith

Area type and code  
Parish (E04002843)

### Population

#### Population change since 2001

Change in numbers	% change		
	This Area	High Peak	Derbyshire
+58	+0.7	+1.6	+4.8

2011 Census Table KS101EW and 2001 Census Table S001

#### Residents

	Number
Total resident population	8,635
- in households	8,518
- in communal establishments	117

Table KS101EW

#### Density of population

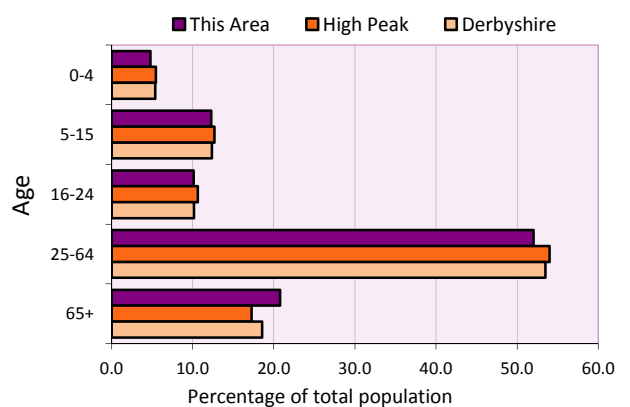
Area (hectares)	Persons per hectare		
	This Area	High Peak	Derbyshire
3,720	2.3	1.7	3.0

Table KS101EW

Age structure	Number of people	% of total population		
		This Area	High Peak	Derbyshire
0-4 years	415	4.8	5.5	5.4
5-15 years	1,062	12.3	12.7	12.4
16-24 years	875	10.1	10.6	10.2
25-64 years	4,491	52.0	54.0	53.5
65 and over	1,792	20.8	17.2	18.6

Table KS102EW

#### Age structure of the population



### Households

#### Total households

Number	Average household size (persons)		
	This Area	High Peak	Derbyshire
3,656	2.36	2.33	2.31

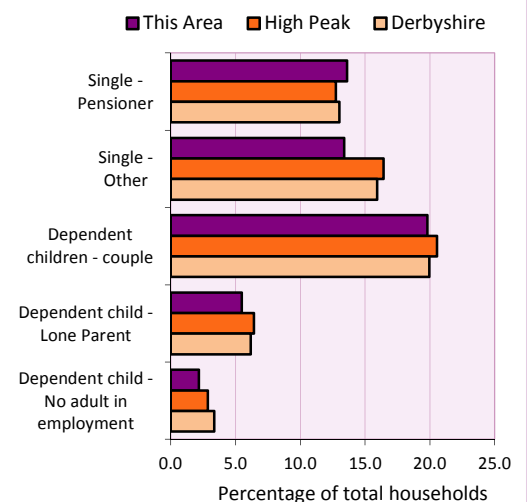
Table KS101EW and KS403EW

#### Household types

Number	% of total households			
	This Area	High Peak	Derbyshire	
Single person households	986	27.0	29.2	28.9
Pensioner	497	13.6	12.7	13.0
Other	489	13.4	16.4	15.9
Households with dependent children				
All	973	26.6	28.4	27.6
Couple	724	19.8	20.5	19.9
Lone parent	200	5.5	6.4	6.2
No adult in employment	79	2.2	2.9	3.4
One person with a long-term health problem - or disability	136	3.7	4.4	4.5

Table KS105EW and KS106EW

#### Household types



#### Car/van ownership

Number of households	% of total households			
	This Area	High Peak	Derbyshire	
No car or van	526	14.4	19.6	20.1

Table KS404EW

# 2011 Census: Summary Profile

Chapel-en-le-Frith

Area type and code  
Parish (E04002843)

## Accommodation

Tenure	Number of households	% of total households		
		This Area	High Peak	Derbyshire
Owner-occupied	2,932	80.2	72.6	71.4
Rented from council/housing association	305	8.3	12.7	15.3
Private/other rented	373	10.2	13.4	12.0
Living rent free	46	1.3	1.2	1.3

Table KS402EW

Amenities	Number of households	% of total households		
		This Area	High Peak	Derbyshire
Overcrowded households	119	3.3	4.8	3.7
Households without central heating	78	2.1	2.3	2.0

Table KS403EW

<b>Total household spaces</b>	<b>3,824</b>
-------------------------------	--------------

Table KS401EW

Type of accommodation	Number of household spaces	% of total household spaces		
		This Area	High Peak	Derbyshire
Detached	1,213	31.7	23.5	31.8
Semi-detached	1,521	39.8	29.2	38.7
Terraced	814	21.3	34.4	20.6
Flat/maisonette/apartment	261	6.8	12.6	8.6
Other	15	0.4	0.2	0.3

Table KS401EW

## Marital status

Marital status	Number of people	% of people aged 16+		
		This Area	High Peak	Derbyshire
Single	1,928	26.9	30.9	29.3
Married	3,764	52.6	49.1	50.5
Same-sex civil partnership	24	0.3	0.2	0.2
Separated	162	2.3	2.4	2.4
Divorced	665	9.3	9.9	9.9
Widowed / surviving partner	615	8.6	7.4	7.7

Table KS103EW

## Health

Health	Number of people	% of total population		
		This Area	High Peak	Derbyshire
People whose day-to-day activities are limited	1,704	19.7	18.1	20.4
People with 'bad' general health	414	4.8	5.2	6.2
People providing unpaid care	1,075	12.4	11.3	12.1

Table KS301EW

# 2011 Census: Summary Profile

Chapel-en-le-Frith

Area type and code  
Parish (E04002843)

## Ethnicity

Ethnic group	Number of people	% of total population		
		This Area	High Peak	Derbyshire
White British	8,369	96.9	95.9	95.8
Black and Minority Ethnic (BME)	266	3.1	4.1	4.2
White Other	140	1.6	2.0	1.7
Mixed/multiple ethnic groups	56	0.6	1.0	0.9
Asian/Asian British	43	0.5	0.8	1.1
Black/African/Caribbean/Black British	15	0.2	0.2	0.4
Other ethnic group	12	0.1	0.1	0.1

Table KS201EW

## Religion

Religion	Number of people	% of total population		
		This Area	High Peak	Derbyshire
Christian	5,738	66.5	64.1	63.6
Buddhist	24	0.3	0.3	0.2
Hindu	4	0.0	0.1	0.2
Jewish	4	0.0	0.0	0.0
Muslim	12	0.1	0.2	0.3
Sikh	0	0.0	0.0	0.3
Other religions	36	0.4	0.4	0.4
No religion	2,174	25.2	27.6	28.0
Not stated	643	7.4	7.2	7.0

Table KS209EW

## Migration

Country of birth by year of arrival in the UK	Number of people	% of total residents		
		This Area	High Peak	Derbyshire
From within the UK total	8,354	96.7	96.4	96.7
From outside the UK total	281	3.3	3.6	3.3
<i>of which</i>				
- Ireland	39	0.5	0.5	0.3
- Other EU country	45	0.5	0.8	0.9
- European (Non-EU country)	53	0.6	0.2	0.1
- Other parts of the world	144	1.7	1.7	1.6

Table LC2804EW

Length of residence in the UK	Number of people	% of total residents		
		This Area	High Peak	Derbyshire
Less than 2 years	22	0.3	0.2	0.3
2 years or more but less than 5 years	35	0.4	0.5	0.5
5 years or more but less than 10 years	46	0.5	0.6	0.6
10 years or more	178	2.1	2.2	2.0
Born in the UK	8,354	96.7	96.4	96.7

Table QS803EW

# 2011 Census: Summary Profile

Chapel-en-le-Frith

Area type and code  
Parish (E04002843)

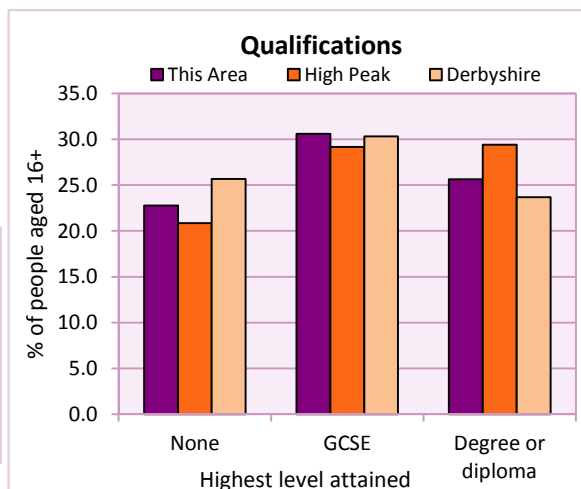
## Education

Full-time students	Number	% of population in age group		
		This Area	High Peak	Derbyshire
aged 16-17	203	89.4	88.0	86.3
aged 18-74	168	2.8	3.9	2.9

Table KS501EW

Qualifications	People (aged 16+)	% of all people aged 16+		
		This Area	High Peak	Derbyshire
No qualifications	1,629	22.8	20.9	25.7
Highest level attained				
GCSE	2,189	30.6	29.2	30.3
Degree or diploma	1,835	25.6	29.4	23.7

Table KS501EW



## Workforce

Economic activity	People aged 16-74								
	This Area			High Peak			Derbyshire		
	Males	Females	All	Males	Females	All	Males	Females	All
Economically active									
- number	2,451	2,128	4,579	25,645	22,915	48,560	211,349	185,704	397,053
- rate (%)	77.6	67.4	72.5	76.3	67.8	72.1	74.8	65.1	69.9
All unemployed									
- number	116	61	177	1,563	1,013	2,576	13,541	8,665	22,206
- rate (%)	3.7	1.9	2.8	4.7	3.0	3.8	4.8	3.0	3.9
Economically inactive									
- number	709	1,029	1,738	7,965	10,864	18,829	71,240	99,505	170,745
- rate (%)	22.4	32.6	27.5	23.7	32.2	27.9	25.2	34.9	30.1

Table KS601EW KS602EW and KS603EW

Hours worked	% of people aged 16-74 in employment					
	Full time (more than 30 hrs)			Part time (30 hrs or less)		
	This Area	High Peak	Derbyshire	This Area	High Peak	Derbyshire
All	68.2	70.0	70.3	31.8	30.0	29.7
Males	84.7	85.6	86.5	15.3	14.4	13.5
Females	49.5	52.8	52.1	50.5	47.2	47.9

Table KS604EW

People travelling to work	This Area	High Peak	Derbyshire
- works mainly at or from home %	10.1	12.2	10.5
- by car or van %	74.7	59.4	65.6
- by public transport or taxi %	4.9	8.4	6.6
- by all other methods of travel %	10.4	20.0	17.4
Average distance travelled km	15.0	15.7	15.2

Table LC7101EW and QS702EW

# 2011 Census: Summary Profile

Chapel-en-le-Frith

Area type and code  
Parish (E04002843)

## Workforce (continued)

Industry (people aged 16-74 in employment)	Number of workers	% of people aged 16-74 in employment		
		This Area	High Peak	Derbyshire
Agriculture, forestry and fishing	71	1.6	1.0	1.0
Mining, quarrying and utilities	98	2.2	2.0	1.9
Manufacturing	704	16.1	13.3	14.9
Construction	342	7.8	7.6	8.5
Wholesale and retail	624	14.2	14.4	16.6
Business services	1,144	26.1	27.4	25.1
Public services	1,172	26.8	29.6	27.5
Other services	225	5.1	4.7	4.5

### Chart category

Other

Other

Manufacturing

Other

Services

Services

Services

Services

Table KS605EW

Occupation (people aged 16-74 in employment)	Number of workers	% of people aged 16-74 in employment		
		This Area	High Peak	Derbyshire
Managers, directors & senior officials	447	10.2	11.3	10.9
Professional	664	15.2	17.8	15.1
Associate professional & technical	485	11.1	11.7	11.0
Administrative & secretarial	442	10.1	10.1	10.9
Skilled trades	614	14.0	12.6	13.3
Caring, leisure & other services	448	10.2	10.0	9.6
Sales & customer service	287	6.6	7.0	7.9
Process, plant & machine operatives	500	11.4	9.0	9.6
Elementary occupations	493	11.3	10.4	11.7

### Chart category

Managerial & professional

Managerial & professional

Managerial & professional

Other non-manual

Manual

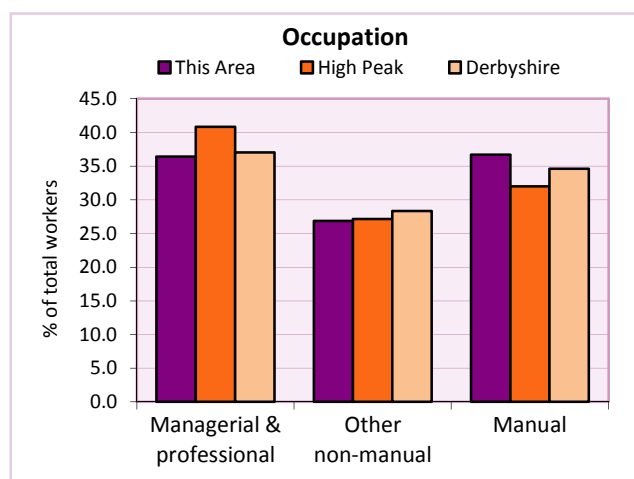
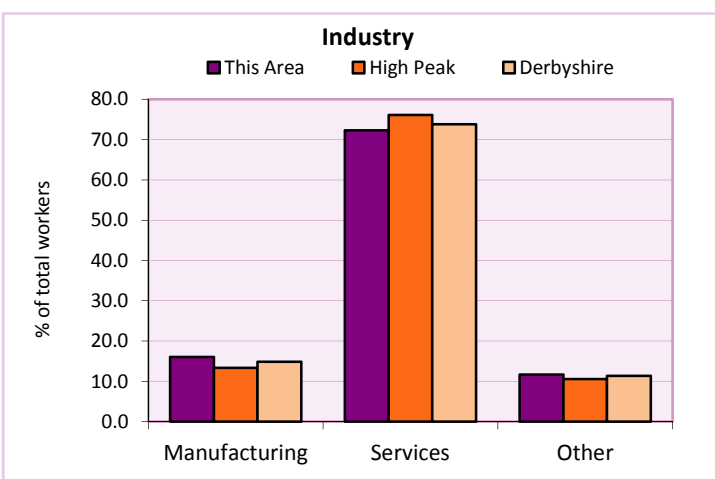
Other non-manual

Other non-manual

Manual

Manual

Table KS608EW



For an **explanation** of the various terms used in these tables, please see the accompanying **Glossary**.

**Extension profiles** covering the following topics in more detail will also be available:

**Population, Economic Activity, Equalities, Health, Households, and Housing.**

**Profiles** in Adobe Acrobat (pdf) format can be downloaded from the Derbyshire Observatory web site, which also provides interactive maps and charts - <http://observatory.derbyshire.gov.uk>

**Please note that figures vary across the Census Profiles as different denominators are used. 2011 Census Table reference numbers are provided beneath each individual table in the Census Profiles should you require further information.**

Version: 6.31