

Charlesworth

Area type and code
Parish (E04002844)

Population

Population change since 2001

Change in numbers	% change		
	This Area	High Peak	Derbyshire
+328	+15.5	+1.6	+4.8

2011 Census Table KS101EW and 2001 Census Table S001

Residents

	Number
Total resident population	2,449
- in households	2,449
- in communal establishments	0

Table KS101EW

Density of population

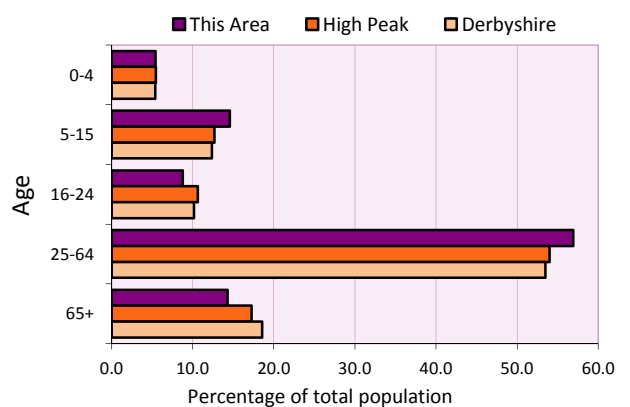
Area (hectares)	Persons per hectare		
	This Area	High Peak	Derbyshire
6,108	0.4	1.7	3.0

Table KS101EW

Age structure	Number of people	% of total population		
		This Area	High Peak	Derbyshire
0-4 years	133	5.4	5.5	5.4
5-15 years	357	14.6	12.7	12.4
16-24 years	215	8.8	10.6	10.2
25-64 years	1,394	56.9	54.0	53.5
65 and over	350	14.3	17.2	18.6

Table KS102EW

Age structure of the population



Households

Total households

Number	Average household size (persons)		
	This Area	High Peak	Derbyshire
956	2.56	2.33	2.31

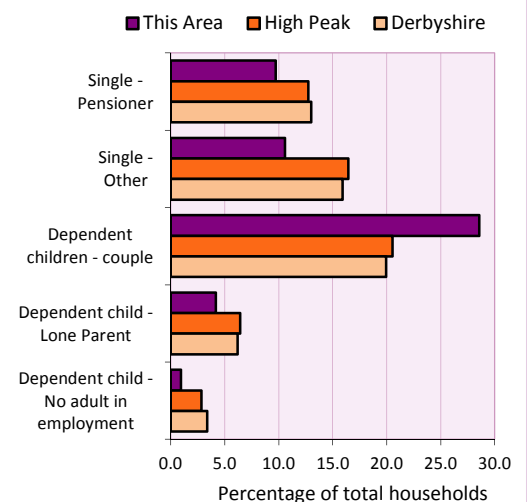
Table KS101EW and KS403EW

Household types

Number	% of total households			
	This Area	High Peak	Derbyshire	
Single person households	194	20.3	29.2	28.9
Pensioner	93	9.7	12.7	13.0
Other	101	10.6	16.4	15.9
Households with dependent children				
All	325	34.0	28.4	27.6
Couple	273	28.6	20.5	19.9
Lone parent	40	4.2	6.4	6.2
No adult in employment	9	0.9	2.9	3.4
One person with a long-term health problem - or disability	33	3.5	4.4	4.5

Table KS105EW and KS106EW

Household types



Car/van ownership

Number of households	% of total households			
	This Area	High Peak	Derbyshire	
No car or van	64	6.7	19.6	20.1

Table KS404EW

2011 Census: Summary Profile

Charlesworth

Area type and code
Parish (E04002844)

Accommodation

Tenure	Number of households	% of total households		
		This Area	High Peak	Derbyshire
Owner-occupied	824	86.2	72.6	71.4
Rented from council/housing association	32	3.3	12.7	15.3
Private/other rented	88	9.2	13.4	12.0
Living rent free	12	1.3	1.2	1.3

Table KS402EW

Amenities	Number of households	% of total households		
		This Area	High Peak	Derbyshire
Overcrowded households	17	1.8	4.8	3.7
Households without central heating	16	1.7	2.3	2.0

Table KS403EW

Total household spaces	993
-------------------------------	-----

Table KS401EW

Type of accommodation	Number of household spaces	% of total household spaces		
		This Area	High Peak	Derbyshire
Detached	545	54.9	23.5	31.8
Semi-detached	204	20.5	29.2	38.7
Terraced	205	20.6	34.4	20.6
Flat/maisonette/apartment	36	3.6	12.6	8.6
Other	3	0.3	0.2	0.3

Table KS401EW

Marital status

Marital status	Number of people	% of people aged 16+		
		This Area	High Peak	Derbyshire
Single	452	23.1	30.9	29.3
Married	1,207	61.6	49.1	50.5
Same-sex civil partnership	9	0.5	0.2	0.2
Separated	43	2.2	2.4	2.4
Divorced	144	7.4	9.9	9.9
Widowed / surviving partner	104	5.3	7.4	7.7

Table KS103EW

Health

Health	Number of people	% of total population		
		This Area	High Peak	Derbyshire
People whose day-to-day activities are limited	323	13.2	18.1	20.4
People with 'bad' general health	87	3.6	5.2	6.2
People providing unpaid care	269	11.0	11.3	12.1

Table KS301EW

2011 Census: Summary Profile

Charlesworth

Area type and code
Parish (E04002844)

Ethnicity

Ethnic group	Number of people	% of total population		
		This Area	High Peak	Derbyshire
White British	2,348	95.9	95.9	95.8
Black and Minority Ethnic (BME)	101	4.1	4.1	4.2
White Other	32	1.3	2.0	1.7
Mixed/multiple ethnic groups	34	1.4	1.0	0.9
Asian/Asian British	27	1.1	0.8	1.1
Black/African/Caribbean/Black British	7	0.3	0.2	0.4
Other ethnic group	1	0.0	0.1	0.1

Table KS201EW

Religion

Religion	Number of people	% of total population		
		This Area	High Peak	Derbyshire
Christian	1,630	66.6	64.1	63.6
Buddhist	8	0.3	0.3	0.2
Hindu	2	0.1	0.1	0.2
Jewish	1	0.0	0.0	0.0
Muslim	10	0.4	0.2	0.3
Sikh	0	0.0	0.0	0.3
Other religions	23	0.9	0.4	0.4
No religion	615	25.1	27.6	28.0
Not stated	160	6.5	7.2	7.0

Table KS209EW

Migration

Country of birth by year of arrival in the UK	Number of people	% of total residents		
		This Area	High Peak	Derbyshire
From within the UK total	2,376	97.0	96.4	96.7
From outside the UK total	73	3.0	3.6	3.3
<i>of which</i>				
- Ireland	12	0.5	0.5	0.3
- Other EU country	7	0.3	0.8	0.9
- European (Non-EU country)	15	0.6	0.2	0.1
- Other parts of the world	39	1.6	1.7	1.6

Table LC2804EW

Length of residence in the UK	Number of people	% of total residents		
		This Area	High Peak	Derbyshire
Less than 2 years	0	0.0	0.2	0.3
2 years or more but less than 5 years	3	0.1	0.5	0.5
5 years or more but less than 10 years	12	0.5	0.6	0.6
10 years or more	58	2.4	2.2	2.0
Born in the UK	2,376	97.0	96.4	96.7

Table QS803EW

2011 Census: Summary Profile

Charlesworth

Area type and code
Parish (E04002844)

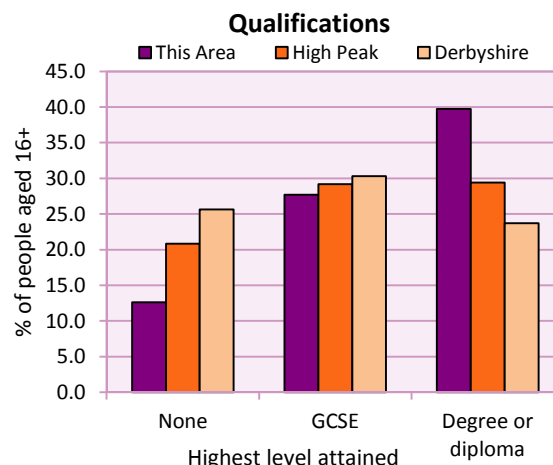
Education

Full-time students	Number	% of population in age group		
		This Area	High Peak	Derbyshire
aged 16-17	49	89.1	88.0	86.3
aged 18-74	51	2.9	3.9	2.9

Table KS501EW

Qualifications	People (aged 16+)	% of all people aged 16+		
		This Area	High Peak	Derbyshire
No qualifications	247	12.6	20.9	25.7
Highest level attained				
GCSE	543	27.7	29.2	30.3
Degree or diploma	778	39.7	29.4	23.7

Table KS501EW



Workforce

Economic activity	People aged 16-74								
	This Area			High Peak			Derbyshire		
	Males	Females	All	Males	Females	All	Males	Females	All
Economically active									
- number	691	673	1,364	25,645	22,915	48,560	211,349	185,704	397,053
- rate (%)	78.4	71.0	74.6	76.3	67.8	72.1	74.8	65.1	69.9
All unemployed									
- number	36	29	65	1,563	1,013	2,576	13,541	8,665	22,206
- rate (%)	4.1	3.1	3.6	4.7	3.0	3.8	4.8	3.0	3.9
Economically inactive									
- number	190	275	465	7,965	10,864	18,829	71,240	99,505	170,745
- rate (%)	21.6	29.0	25.4	23.7	32.2	27.9	25.2	34.9	30.1

Table KS601EW KS602EW and KS603EW

Hours worked	% of people aged 16-74 in employment					
	Full time (more than 30 hrs)			Part time (30 hrs or less)		
	This Area	High Peak	Derbyshire	This Area	High Peak	Derbyshire
All	72.6	70.0	70.3	27.4	30.0	29.7
Males	86.5	85.6	86.5	13.5	14.4	13.5
Females	58.4	52.8	52.1	41.6	47.2	47.9

Table KS604EW

People travelling to work	This Area	High Peak	Derbyshire
- works mainly at or from home %	46.4	12.2	10.5
- by car or van %	44.3	59.4	65.6
- by public transport or taxi %	5.2	8.4	6.6
- by all other methods of travel %	4.1	20.0	17.4
Average distance travelled km	18.9	15.7	15.2

Table LC7101EW and QS702EW

2011 Census: Summary Profile

Charlesworth

Area type and code
Parish (E04002844)

Workforce (continued)

Industry (people aged 16-74 in employment)	Number of workers	% of people aged 16-74 in employment		
		This Area	High Peak	Derbyshire
Agriculture, forestry and fishing	4	0.3	1.0	1.0
Mining, quarrying and utilities	16	1.2	2.0	1.9
Manufacturing	138	10.7	13.3	14.9
Construction	96	7.4	7.6	8.5
Wholesale and retail	182	14.1	14.4	16.6
Business services	385	29.8	27.4	25.1
Public services	407	31.5	29.6	27.5
Other services	63	4.9	4.7	4.5

Chart category

Other

Other

Manufacturing

Other

Services

Services

Services

Services

Table KS605EW

Occupation (people aged 16-74 in employment)	Number of workers	% of people aged 16-74 in employment		
		This Area	High Peak	Derbyshire
Managers, directors & senior officials	219	17.0	11.3	10.9
Professional	314	24.3	17.8	15.1
Associate professional & technical	203	15.7	11.7	11.0
Administrative & secretarial	165	12.8	10.1	10.9
Skilled trades	126	9.8	12.6	13.3
Caring, leisure & other services	80	6.2	10.0	9.6
Sales & customer service	74	5.7	7.0	7.9
Process, plant & machine operatives	61	4.7	9.0	9.6
Elementary occupations	49	3.8	10.4	11.7

Chart category

Managerial & professional

Managerial & professional

Managerial & professional

Other non-manual

Manual

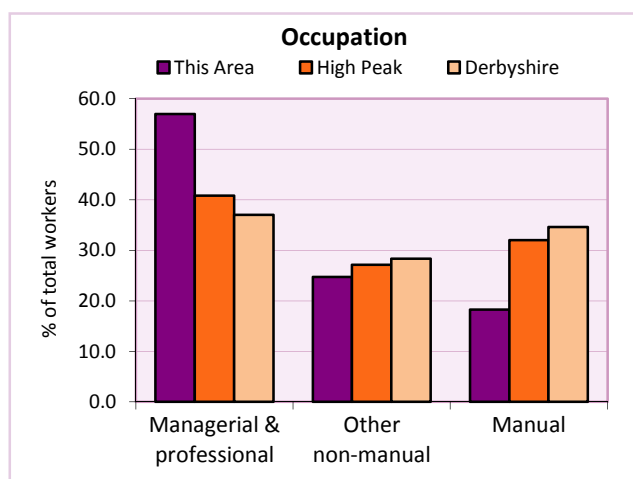
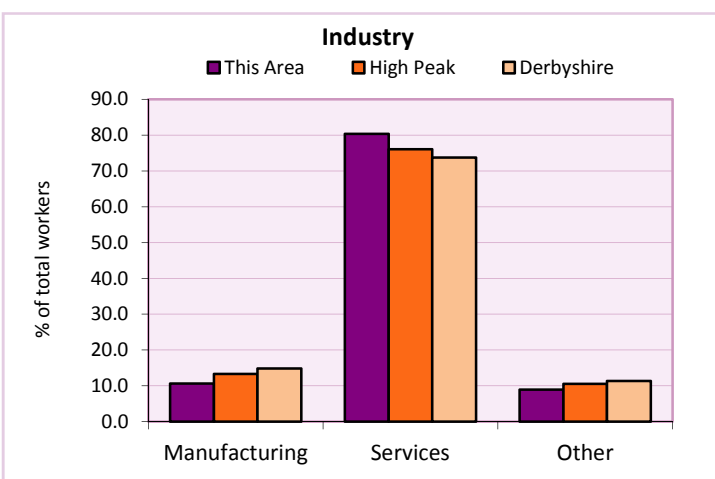
Other non-manual

Other non-manual

Manual

Manual

Table KS608EW



For an **explanation** of the various terms used in these tables, please see the accompanying **Glossary**.

Extension profiles covering the following topics in more detail will also be available:

Population, Economic Activity, Equalities, Health, Households, and Housing.

Profiles in Adobe Acrobat (pdf) format can be downloaded from the Derbyshire Observatory web site, which also provides interactive maps and charts - <http://observatory.derbyshire.gov.uk>

Please note that figures vary across the Census Profiles as different denominators are used. 2011 Census Table reference numbers are provided beneath each individual table in the Census Profiles should you require further information.

Version: 6.31