

Chinley Buxworth and Brownside

Area type and code
Parish (E04002845)

Population

Population change since 2001

Change in numbers	% change		
	This Area	High Peak	Derbyshire
-95	-3.3	+1.6	+4.8

2011 Census Table KS101EW and 2001 Census Table S001

Residents

	Number
Total resident population	2,796
- in households	2,789
- in communal establishments	7

Table KS101EW

Density of population

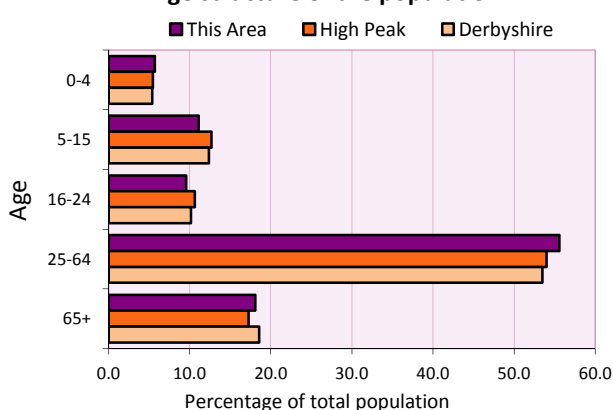
Area (hectares)	Persons per hectare		
	This Area	High Peak	Derbyshire
1,655	1.7	1.7	3.0

Table KS101EW

Age structure	Number of people	% of total population		
		This Area	High Peak	Derbyshire
0-4 years	159	5.7	5.5	5.4
5-15 years	310	11.1	12.7	12.4
16-24 years	267	9.5	10.6	10.2
25-64 years	1,554	55.6	54.0	53.5
65 and over	506	18.1	17.2	18.6

Table KS102EW

Age structure of the population



Households

Total households

Number	Average household size (persons)		
	This Area	High Peak	Derbyshire
1,200	2.33	2.33	2.31

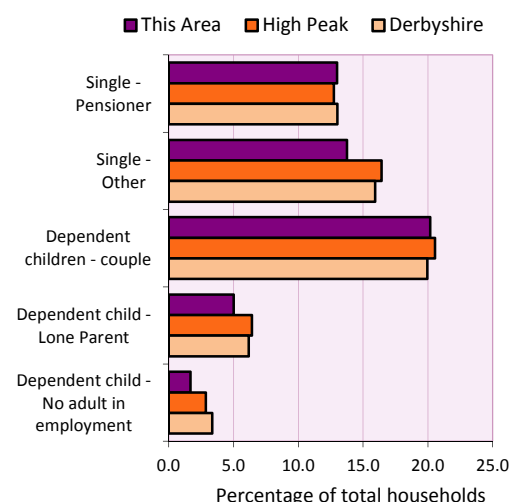
Table KS101EW and KS403EW

Household types

Number	% of total households			
	This Area	High Peak	Derbyshire	
Single person households	321	26.8	29.2	28.9
Pensioner	156	13.0	12.7	13.0
Other	165	13.8	16.4	15.9
Households with dependent children				
All	317	26.4	28.4	27.6
Couple	242	20.2	20.5	19.9
Lone parent	60	5.0	6.4	6.2
No adult in employment	20	1.7	2.9	3.4
One person with a long-term health problem - or disability	45	3.8	4.4	4.5

Table KS105EW and KS106EW

Household types



Car/van ownership

Number of households	% of total households			
	This Area	High Peak	Derbyshire	
No car or van	123	10.3	19.6	20.1

Table KS404EW

2011 Census: Summary Profile

Chinley Buxworth and Brownside

Area type and code
Parish (E04002845)

Accommodation

Tenure	Number of households	% of total households		
		This Area	High Peak	Derbyshire
Owner-occupied	978	81.5	72.6	71.4
Rented from council/housing association	91	7.6	12.7	15.3
Private/other rented	116	9.7	13.4	12.0
Living rent free	15	1.3	1.2	1.3

Table KS402EW

Amenities	Number of households	% of total households		
		This Area	High Peak	Derbyshire
Overcrowded households	29	2.4	4.8	3.7
Households without central heating	20	1.7	2.3	2.0

Table KS403EW

Total household spaces	1,273
-------------------------------	--------------

Table KS401EW

Type of accommodation	Number of household spaces	% of total household spaces		
		This Area	High Peak	Derbyshire
Detached	390	30.6	23.5	31.8
Semi-detached	398	31.3	29.2	38.7
Terraced	403	31.7	34.4	20.6
Flat/maisonette/apartment	82	6.4	12.6	8.6
Other	0	0.0	0.2	0.3

Table KS401EW

Marital status

Marital status	Number of people	% of people aged 16+		
		This Area	High Peak	Derbyshire
Single	647	27.8	30.9	29.3
Married	1,243	53.4	49.1	50.5
Same-sex civil partnership	12	0.5	0.2	0.2
Separated	51	2.2	2.4	2.4
Divorced	224	9.6	9.9	9.9
Widowed / surviving partner	150	6.4	7.4	7.7

Table KS103EW

Health

Health	Number of people	% of total population		
		This Area	High Peak	Derbyshire
People whose day-to-day activities are limited	455	16.3	18.1	20.4
People with 'bad' general health	123	4.4	5.2	6.2
People providing unpaid care	322	11.5	11.3	12.1

Table KS301EW

2011 Census: Summary Profile

Chinley Buxworth and Brownside

Area type and code
Parish (E04002845)

Ethnicity

Ethnic group	Number of people	% of total population		
		This Area	High Peak	Derbyshire
White British	2,692	96.3	95.9	95.8
Black and Minority Ethnic (BME)	104	3.7	4.1	4.2
White Other	57	2.0	2.0	1.7
Mixed/multiple ethnic groups	26	0.9	1.0	0.9
Asian/Asian British	20	0.7	0.8	1.1
Black/African/Caribbean/Black British	0	0.0	0.2	0.4
Other ethnic group	1	0.0	0.1	0.1

Table KS201EW

Religion

Religion	Number of people	% of total population		
		This Area	High Peak	Derbyshire
Christian	1,686	60.3	64.1	63.6
Buddhist	10	0.4	0.3	0.2
Hindu	4	0.1	0.1	0.2
Jewish	2	0.1	0.0	0.0
Muslim	1	0.0	0.2	0.3
Sikh	1	0.0	0.0	0.3
Other religions	15	0.5	0.4	0.4
No religion	844	30.2	27.6	28.0
Not stated	233	8.3	7.2	7.0

Table KS209EW

Migration

Country of birth by year of arrival in the UK	Number of people	% of total residents		
		This Area	High Peak	Derbyshire
From within the UK total	2,691	96.2	96.4	96.7
From outside the UK total	105	3.8	3.6	3.3
<i>of which</i>				
- Ireland	10	0.4	0.5	0.3
- Other EU country	30	1.1	0.8	0.9
- European (Non-EU country)	18	0.6	0.2	0.1
- Other parts of the world	47	1.7	1.7	1.6

Table LC2804EW

Length of residence in the UK	Number of people	% of total residents		
		This Area	High Peak	Derbyshire
Less than 2 years	4	0.1	0.2	0.3
2 years or more but less than 5 years	13	0.5	0.5	0.5
5 years or more but less than 10 years	16	0.6	0.6	0.6
10 years or more	72	2.6	2.2	2.0
Born in the UK	2,691	96.2	96.4	96.7

Table QS803EW

2011 Census: Summary Profile

Chinley Buxworth and Brownside

Area type and code
Parish (E04002845)

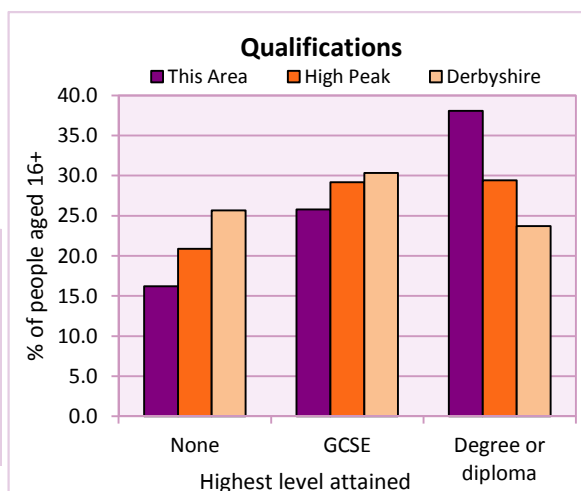
Education

Full-time students	Number	% of population in age group		
		This Area	High Peak	Derbyshire
aged 16-17	56	84.8	88.0	86.3
aged 18-74	66	3.2	3.9	2.9

Table KS501EW

Qualifications	People (aged 16+)	% of all people aged 16+		
		This Area	High Peak	Derbyshire
No qualifications	377	16.2	20.9	25.7
Highest level attained				
GCSE	600	25.8	29.2	30.3
Degree or diploma	886	38.1	29.4	23.7

Table KS501EW



Workforce

Economic activity	People aged 16-74								
	This Area			High Peak			Derbyshire		
	Males	Females	All	Males	Females	All	Males	Females	All
Economically active									
- number	842	732	1,574	25,645	22,915	48,560	211,349	185,704	397,053
- rate (%)	78.8	69.5	74.2	76.3	67.8	72.1	74.8	65.1	69.9
All unemployed									
- number	29	22	51	1,563	1,013	2,576	13,541	8,665	22,206
- rate (%)	2.7	2.1	2.4	4.7	3.0	3.8	4.8	3.0	3.9
Economically inactive									
- number	226	321	547	7,965	10,864	18,829	71,240	99,505	170,745
- rate (%)	21.2	30.5	25.8	23.7	32.2	27.9	25.2	34.9	30.1

Table KS601EW KS602EW and KS603EW

Hours worked	% of people aged 16-74 in employment					
	Full time (more than 30 hrs)			Part time (30 hrs or less)		
	This Area	High Peak	Derbyshire	This Area	High Peak	Derbyshire
All	71.7	70.0	70.3	28.3	30.0	29.7
Males	85.7	85.6	86.5	14.3	14.4	13.5
Females	55.7	52.8	52.1	44.3	47.2	47.9

Table KS604EW

People travelling to work	This Area	High Peak	Derbyshire
- works mainly at or from home %	17.7	12.2	10.5
- by car or van %	61.3	59.4	65.6
- by public transport or taxi %	7.3	8.4	6.6
- by all other methods of travel %	13.6	20.0	17.4
Average distance travelled km	19.8	15.7	15.2

Table LC7101EW and QS702EW

2011 Census: Summary Profile

Chinley Buxworth and Brownside

Area type and code
Parish (E04002845)

Workforce (continued)

Industry (people aged 16-74 in employment)	Number of workers	% of people aged 16-74 in employment		
		This Area	High Peak	Derbyshire
Agriculture, forestry and fishing	24	1.6	1.0	1.0
Mining, quarrying and utilities	29	1.9	2.0	1.9
Manufacturing	209	13.8	13.3	14.9
Construction	132	8.7	7.6	8.5
Wholesale and retail	167	11.0	14.4	16.6
Business services	417	27.5	27.4	25.1
Public services	463	30.6	29.6	27.5
Other services	74	4.9	4.7	4.5

Chart category

Other

Other

Manufacturing

Other

Services

Services

Services

Services

Table KS605EW

Occupation (people aged 16-74 in employment)	Number of workers	% of people aged 16-74 in employment		
		This Area	High Peak	Derbyshire
Managers, directors & senior officials	180	11.9	11.3	10.9
Professional	338	22.3	17.8	15.1
Associate professional & technical	185	12.2	11.7	11.0
Administrative & secretarial	160	10.6	10.1	10.9
Skilled trades	214	14.1	12.6	13.3
Caring, leisure & other services	149	9.8	10.0	9.6
Sales & customer service	80	5.3	7.0	7.9
Process, plant & machine operatives	105	6.9	9.0	9.6
Elementary occupations	104	6.9	10.4	11.7

Chart category

Managerial & professional

Managerial & professional

Managerial & professional

Other non-manual

Manual

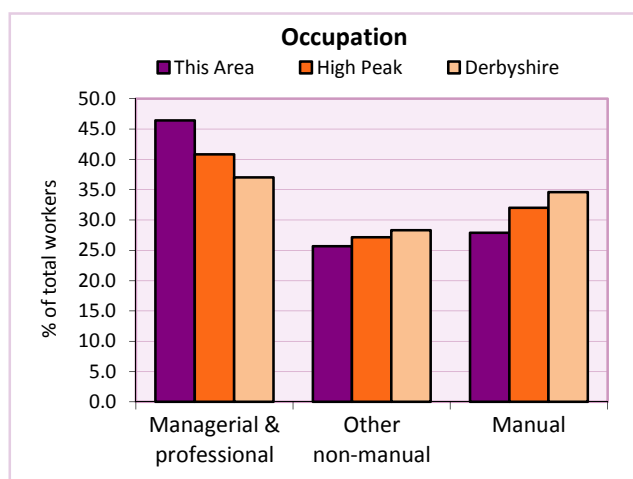
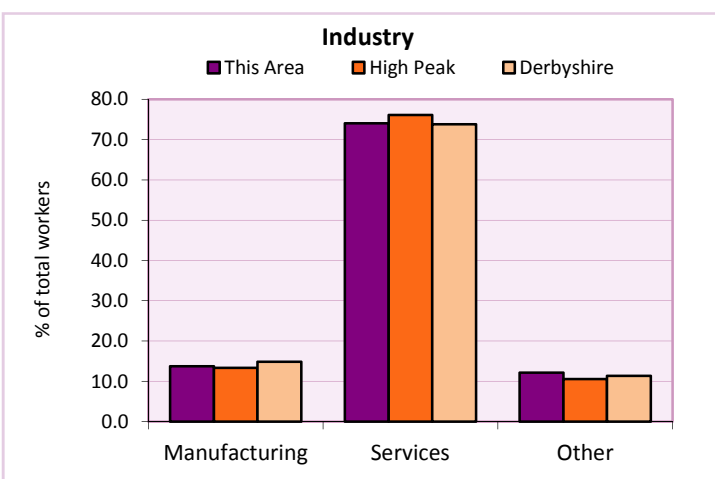
Other non-manual

Other non-manual

Manual

Manual

Table KS608EW



For an **explanation** of the various terms used in these tables, please see the accompanying **Glossary**.

Extension profiles covering the following topics in more detail will also be available:

Population, Economic Activity, Equalities, Health, Households, and Housing.

Profiles in Adobe Acrobat (pdf) format can be downloaded from the Derbyshire Observatory web site, which also provides interactive maps and charts - <http://observatory.derbyshire.gov.uk>

Please note that figures vary across the Census Profiles as different denominators are used. 2011 Census Table reference numbers are provided beneath each individual table in the Census Profiles should you require further information.

Version: 6.31