

Hartington Upper Quarter

Area type and code
Parish (E04002850)

Population

Population change since 2001

Change in numbers	% change		
	This Area	High Peak	Derbyshire
-13	-2.9	+1.6	+4.8

2011 Census Table KS101EW and 2001 Census Table S001

Residents

	Number
Total resident population	438
- in households	436
- in communal establishments	2

Table KS101EW

Density of population

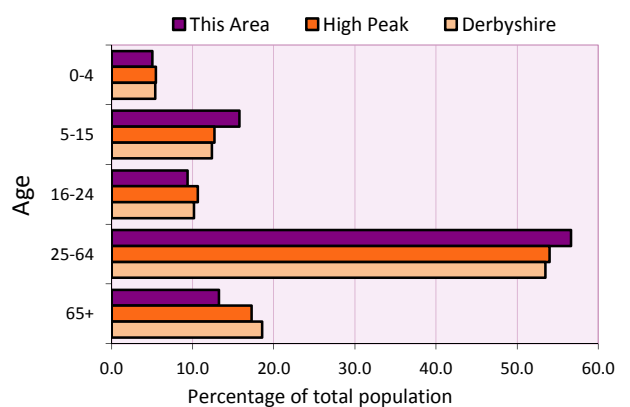
Area (hectares)	Persons per hectare		
	This Area	High Peak	Derbyshire
4,760	0.1	1.7	3.0

Table KS101EW

Age structure	Number of people	% of total population		
		This Area	High Peak	Derbyshire
0-4 years	22	5.0	5.5	5.4
5-15 years	69	15.8	12.7	12.4
16-24 years	41	9.4	10.6	10.2
25-64 years	248	56.6	54.0	53.5
65 and over	58	13.2	17.2	18.6

Table KS102EW

Age structure of the population



Households

Total households

Number	Average household size (persons)		
	This Area	High Peak	Derbyshire
167	2.62	2.33	2.31

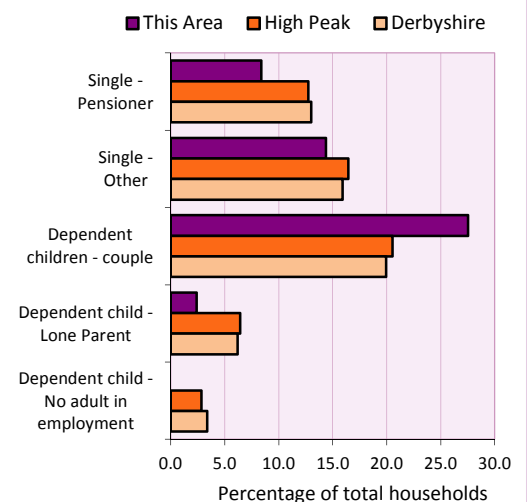
Table KS101EW and KS403EW

Household types

Number	% of total households			
	This Area	High Peak	Derbyshire	
Single person households	38	22.8	29.2	28.9
Pensioner	14	8.4	12.7	13.0
Other	24	14.4	16.4	15.9
Households with dependent children				
All	53	31.7	28.4	27.6
Couple	46	27.5	20.5	19.9
Lone parent	4	2.4	6.4	6.2
No adult in employment	0	0.0	2.9	3.4
One person with a long-term health problem - or disability	10	6.0	4.4	4.5

Table KS105EW and KS106EW

Household types



Car/van ownership

Number of households	% of total households			
	This Area	High Peak	Derbyshire	
No car or van	6	3.6	19.6	20.1

Table KS404EW

2011 Census: Summary Profile

Hartington Upper Quarter

Area type and code
Parish (E04002850)

Accommodation

Tenure	Number of households	% of total households		
		This Area	High Peak	Derbyshire
Owner-occupied	140	83.8	72.6	71.4
Rented from council/housing association	4	2.4	12.7	15.3
Private/other rented	22	13.2	13.4	12.0
Living rent free	1	0.6	1.2	1.3

Table KS402EW

Amenities	Number of households	% of total households		
		This Area	High Peak	Derbyshire
Overcrowded households	4	2.4	4.8	3.7
Households without central heating	6	3.6	2.3	2.0

Table KS403EW

Total household spaces	174
-------------------------------	------------

Table KS401EW

Type of accommodation	Number of household spaces	% of total household spaces		
		This Area	High Peak	Derbyshire
Detached	54	31.0	23.5	31.8
Semi-detached	79	45.4	29.2	38.7
Terraced	37	21.3	34.4	20.6
Flat/maisonette/apartment	4	2.3	12.6	8.6
Other	0	0.0	0.2	0.3

Table KS401EW

Marital status

Marital status	Number of people	% of people aged 16+		
		This Area	High Peak	Derbyshire
Single	99	28.5	30.9	29.3
Married	197	56.8	49.1	50.5
Same-sex civil partnership	0	0.0	0.2	0.2
Separated	6	1.7	2.4	2.4
Divorced	28	8.1	9.9	9.9
Widowed / surviving partner	17	4.9	7.4	7.7

Table KS103EW

Health

Health	Number of people	% of total population		
		This Area	High Peak	Derbyshire
People whose day-to-day activities are limited	82	18.7	18.1	20.4
People with 'bad' general health	27	6.2	5.2	6.2
People providing unpaid care	49	11.2	11.3	12.1

Table KS301EW

2011 Census: Summary Profile

Hartington Upper Quarter

Area type and code
Parish (E04002850)

Ethnicity

Ethnic group	Number of people	% of total population		
		This Area	High Peak	Derbyshire
White British	424	96.8	95.9	95.8
Black and Minority Ethnic (BME)	14	3.2	4.1	4.2
White Other	9	2.1	2.0	1.7
Mixed/multiple ethnic groups	5	1.1	1.0	0.9
Asian/Asian British	0	0.0	0.8	1.1
Black/African/Caribbean/Black British	0	0.0	0.2	0.4
Other ethnic group	0	0.0	0.1	0.1

Table KS201EW

Religion

Religion	Number of people	% of total population		
		This Area	High Peak	Derbyshire
Christian	292	66.7	64.1	63.6
Buddhist	1	0.2	0.3	0.2
Hindu	0	0.0	0.1	0.2
Jewish	0	0.0	0.0	0.0
Muslim	0	0.0	0.2	0.3
Sikh	0	0.0	0.0	0.3
Other religions	0	0.0	0.4	0.4
No religion	105	24.0	27.6	28.0
Not stated	40	9.1	7.2	7.0

Table KS209EW

Migration

Country of birth by year of arrival in the UK	Number of people	% of total residents		
		This Area	High Peak	Derbyshire
From within the UK total	422	96.3	96.4	96.7
From outside the UK total	16	3.7	3.6	3.3
<i>of which</i>				
- Ireland	0	0.0	0.5	0.3
- Other EU country	6	1.4	0.8	0.9
- European (Non-EU country)	1	0.2	0.2	0.1
- Other parts of the world	9	2.1	1.7	1.6

Table LC2804EW

Length of residence in the UK	Number of people	% of total residents		
		This Area	High Peak	Derbyshire
Less than 2 years	5	1.1	0.2	0.3
2 years or more but less than 5 years	2	0.5	0.5	0.5
5 years or more but less than 10 years	1	0.2	0.6	0.6
10 years or more	8	1.8	2.2	2.0
Born in the UK	422	96.3	96.4	96.7

Table QS803EW

2011 Census: Summary Profile

Hartington Upper Quarter

Area type and code
Parish (E04002850)

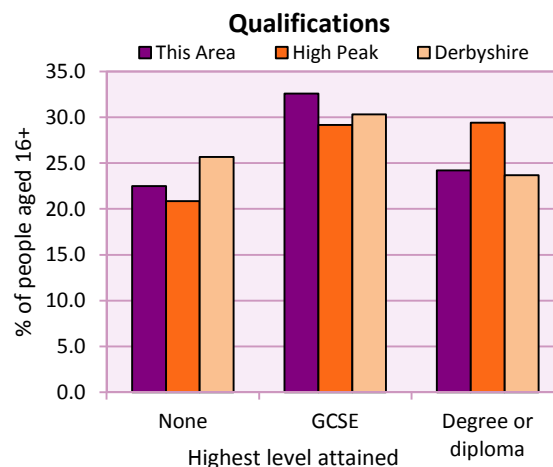
Education

Full-time students	Number	% of population in age group		
		This Area	High Peak	Derbyshire
aged 16-17	7	77.8	88.0	86.3
aged 18-74	13	4.1	3.9	2.9

Table KS501EW

Qualifications	People (aged 16+)	% of all people aged 16+		
		This Area	High Peak	Derbyshire
No qualifications	78	22.5	20.9	25.7
Highest level attained				
GCSE	113	32.6	29.2	30.3
Degree or diploma	84	24.2	29.4	23.7

Table KS501EW



Workforce

Economic activity	People aged 16-74								
	This Area			High Peak			Derbyshire		
	Males	Females	All	Males	Females	All	Males	Females	All
Economically active									
- number	136	119	255	25,645	22,915	48,560	211,349	185,704	397,053
- rate (%)	79.1	77.8	78.5	76.3	67.8	72.1	74.8	65.1	69.9
All unemployed									
- number	5	4	9	1,563	1,013	2,576	13,541	8,665	22,206
- rate (%)	2.9	2.6	2.8	4.7	3.0	3.8	4.8	3.0	3.9
Economically inactive									
- number	36	34	70	7,965	10,864	18,829	71,240	99,505	170,745
- rate (%)	20.9	22.2	21.5	23.7	32.2	27.9	25.2	34.9	30.1

Table KS601EW KS602EW and KS603EW

Hours worked	% of people aged 16-74 in employment					
	Full time (more than 30 hrs)			Part time (30 hrs or less)		
	This Area	High Peak	Derbyshire	This Area	High Peak	Derbyshire
All	63.3	70.0	70.3	36.7	30.0	29.7
Males	82.4	85.6	86.5	17.6	14.4	13.5
Females	41.2	52.8	52.1	58.8	47.2	47.9

Table KS604EW

People travelling to work	This Area	High Peak	Derbyshire
- works mainly at or from home %	15.8	12.2	10.5
- by car or van %	66.5	59.4	65.6
- by public transport or taxi %	8.4	8.4	6.6
- by all other methods of travel %	9.3	20.0	17.4
Average distance travelled km	18.1	15.7	15.2

Table LC7101EW and QS702EW

2011 Census: Summary Profile

Hartington Upper Quarter

Area type and code
Parish (E04002850)

Workforce (continued)

Industry (people aged 16-74 in employment)	Number of workers	% of people aged 16-74 in employment		
		This Area	High Peak	Derbyshire
Agriculture, forestry and fishing	13	5.3	1.0	1.0
Mining, quarrying and utilities	18	7.3	2.0	1.9
Manufacturing	31	12.7	13.3	14.9
Construction	11	4.5	7.6	8.5
Wholesale and retail	38	15.5	14.4	16.6
Business services	76	31.0	27.4	25.1
Public services	50	20.4	29.6	27.5
Other services	8	3.3	4.7	4.5

Chart category

Other

Other

Manufacturing

Other

Services

Services

Services

Services

Table KS605EW

Occupation (people aged 16-74 in employment)	Number of workers	% of people aged 16-74 in employment		
		This Area	High Peak	Derbyshire
Managers, directors & senior officials	24	9.8	11.3	10.9
Professional	31	12.7	17.8	15.1
Associate professional & technical	17	6.9	11.7	11.0
Administrative & secretarial	23	9.4	10.1	10.9
Skilled trades	52	21.2	12.6	13.3
Caring, leisure & other services	20	8.2	10.0	9.6
Sales & customer service	14	5.7	7.0	7.9
Process, plant & machine operatives	38	15.5	9.0	9.6
Elementary occupations	26	10.6	10.4	11.7

Chart category

Managerial & professional

Managerial & professional

Managerial & professional

Other non-manual

Manual

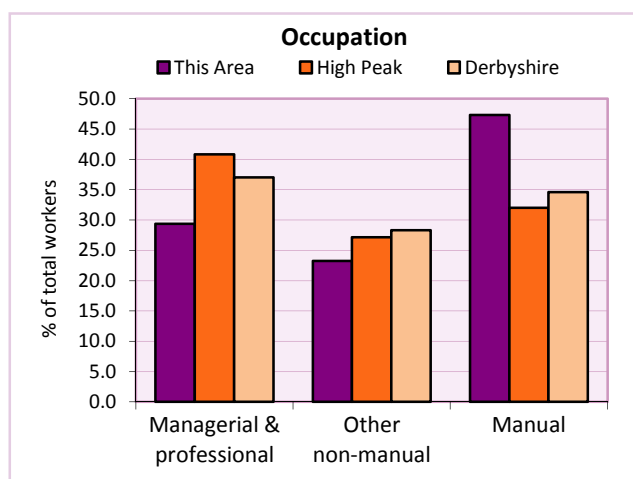
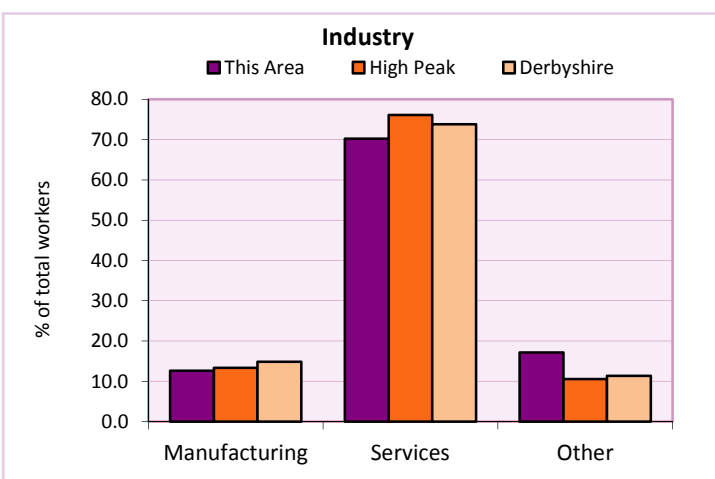
Other non-manual

Other non-manual

Manual

Manual

Table KS608EW



For an **explanation** of the various terms used in these tables, please see the accompanying **Glossary**.

Extension profiles covering the following topics in more detail will also be available:

Population, Economic Activity, Equalities, Health, Households, and Housing.

Profiles in Adobe Acrobat (pdf) format can be downloaded from the Derbyshire Observatory web site, which also provides interactive maps and charts - <http://observatory.derbyshire.gov.uk>

Please note that figures vary across the Census Profiles as different denominators are used. 2011 Census Table reference numbers are provided beneath each individual table in the Census Profiles should you require further information.

Version: 6.31