

New Mills

Area type and code
Parish (E04002855)

Population

Population change since 2001

Change in numbers	% change		
	This Area	High Peak	Derbyshire
-104	-1.1	+1.6	+4.8

2011 Census Table KS101EW and 2001 Census Table S001

Residents

	Number
Total resident population	9,521
- in households	9,430
- in communal establishments	91

Table KS101EW

Density of population

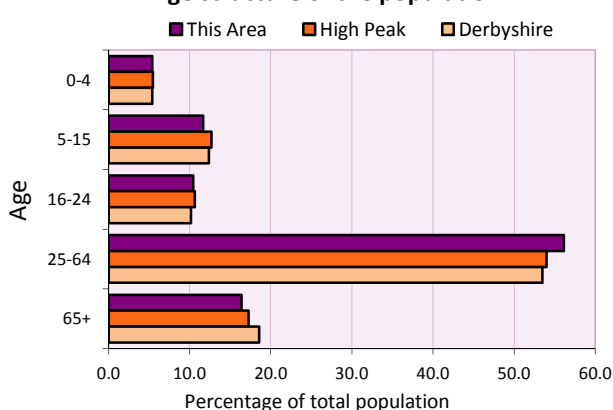
Area (hectares)	Persons per hectare		
	This Area	High Peak	Derbyshire
2,104	4.5	1.7	3.0

Table KS101EW

Age structure	Number of people	% of total population		
		This Area	High Peak	Derbyshire
0-4 years	511	5.4	5.5	5.4
5-15 years	1,111	11.7	12.7	12.4
16-24 years	994	10.4	10.6	10.2
25-64 years	5,344	56.1	54.0	53.5
65 and over	1,561	16.4	17.2	18.6

Table KS102EW

Age structure of the population



Households

Total households

Number	Average household size (persons)		
	This Area	High Peak	Derbyshire
4,151	2.29	2.33	2.31

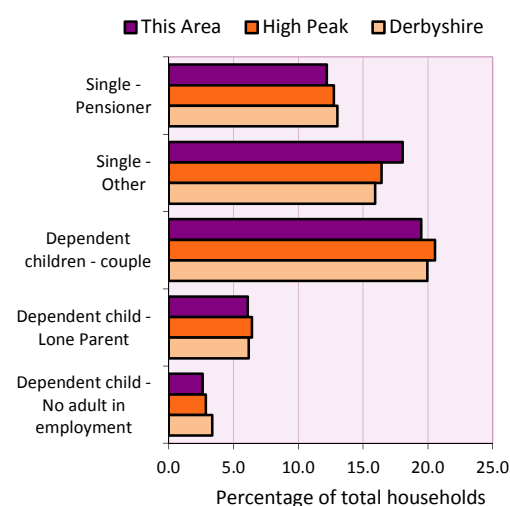
Table KS101EW and KS403EW

Household types

Number	% of total households			
	This Area	High Peak	Derbyshire	
Single person households	1,255	30.2	29.2	28.9
Pensioner	506	12.2	12.7	13.0
Other	749	18.0	16.4	15.9
Households with dependent children				
All	1,119	27.0	28.4	27.6
Couple	809	19.5	20.5	19.9
Lone parent	253	6.1	6.4	6.2
No adult in employment	108	2.6	2.9	3.4
One person with a long-term health problem - or disability	175	4.2	4.4	4.5

Table KS105EW and KS106EW

Household types



Car/van ownership

Number of households	% of total households			
	This Area	High Peak	Derbyshire	
No car or van	810	19.5	19.6	20.1

Table KS404EW

2011 Census: Summary Profile

New Mills

Area type and code
Parish (E04002855)

Accommodation

Tenure	Number of households	% of total households		
		This Area	High Peak	Derbyshire
Owner-occupied	3,069	73.9	72.6	71.4
Rented from council/housing association	496	11.9	12.7	15.3
Private/other rented	542	13.1	13.4	12.0
Living rent free	44	1.1	1.2	1.3

Table KS402EW

Amenities	Number of households	% of total households		
		This Area	High Peak	Derbyshire
Overcrowded households	205	4.9	4.8	3.7
Households without central heating	108	2.6	2.3	2.0

Table KS403EW

Total household spaces	4,314
-------------------------------	--------------

Table KS401EW

Type of accommodation	Number of household spaces	% of total household spaces		
		This Area	High Peak	Derbyshire
Detached	752	17.4	23.5	31.8
Semi-detached	1,378	31.9	29.2	38.7
Terraced	1,827	42.4	34.4	20.6
Flat/maisonette/apartment	349	8.1	12.6	8.6
Other	8	0.2	0.2	0.3

Table KS401EW

Marital status

Marital status	Number of people	% of people aged 16+		
		This Area	High Peak	Derbyshire
Single	2,535	32.1	30.9	29.3
Married	3,760	47.6	49.1	50.5
Same-sex civil partnership	21	0.3	0.2	0.2
Separated	191	2.4	2.4	2.4
Divorced	847	10.7	9.9	9.9
Widowed / surviving partner	545	6.9	7.4	7.7

Table KS103EW

Health

Health	Number of people	% of total population		
		This Area	High Peak	Derbyshire
People whose day-to-day activities are limited	1,722	18.1	18.1	20.4
People with 'bad' general health	511	5.4	5.2	6.2
People providing unpaid care	1,084	11.4	11.3	12.1

Table KS301EW

2011 Census: Summary Profile

New Mills

Area type and code
Parish (E04002855)

Ethnicity

Ethnic group	Number of people	% of total population		
		This Area	High Peak	Derbyshire
White British	9,105	95.6	95.9	95.8
Black and Minority Ethnic (BME)	416	4.4	4.1	4.2
White Other	215	2.3	2.0	1.7
Mixed/multiple ethnic groups	98	1.0	1.0	0.9
Asian/Asian British	88	0.9	0.8	1.1
Black/African/Caribbean/Black British	6	0.1	0.2	0.4
Other ethnic group	9	0.1	0.1	0.1

Table KS201EW

Religion

Religion	Number of people	% of total population		
		This Area	High Peak	Derbyshire
Christian	5,792	60.8	64.1	63.6
Buddhist	43	0.5	0.3	0.2
Hindu	5	0.1	0.1	0.2
Jewish	6	0.1	0.0	0.0
Muslim	26	0.3	0.2	0.3
Sikh	0	0.0	0.0	0.3
Other religions	54	0.6	0.4	0.4
No religion	2,919	30.7	27.6	28.0
Not stated	676	7.1	7.2	7.0

Table KS209EW

Migration

Country of birth by year of arrival in the UK	Number of people	% of total residents		
		This Area	High Peak	Derbyshire
From within the UK total	9,160	96.2	96.4	96.7
From outside the UK total	361	3.8	3.6	3.3
<i>of which</i>				
- Ireland	40	0.4	0.5	0.3
- Other EU country	90	0.9	0.8	0.9
- European (Non-EU country)	54	0.6	0.2	0.1
- Other parts of the world	177	1.9	1.7	1.6

Table LC2804EW

Length of residence in the UK	Number of people	% of total residents		
		This Area	High Peak	Derbyshire
Less than 2 years	21	0.2	0.2	0.3
2 years or more but less than 5 years	91	1.0	0.5	0.5
5 years or more but less than 10 years	63	0.7	0.6	0.6
10 years or more	186	2.0	2.2	2.0
Born in the UK	9,160	96.2	96.4	96.7

Table QS803EW

2011 Census: Summary Profile

New Mills

Area type and code
Parish (E04002855)

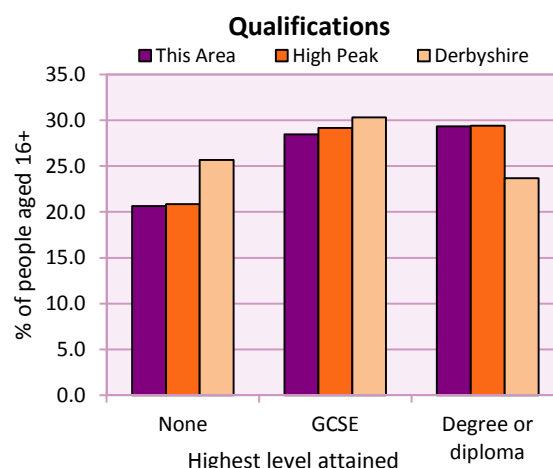
Education

Full-time students	Number	% of population in age group		
		This Area	High Peak	Derbyshire
aged 16-17	226	87.9	88.0	86.3
aged 18-74	224	3.2	3.9	2.9

Table KS501EW

Qualifications	People (aged 16+)	% of all people aged 16+		
		This Area	High Peak	Derbyshire
No qualifications	1,630	20.6	20.9	25.7
Highest level attained				
GCSE	2,249	28.5	29.2	30.3
Degree or diploma	2,316	29.3	29.4	23.7

Table KS501EW



Workforce

Economic activity	People aged 16-74								
	This Area			High Peak			Derbyshire		
	Males	Females	All	Males	Females	All	Males	Females	All
Economically active									
- number	2,772	2,485	5,257	25,645	22,915	48,560	211,349	185,704	397,053
- rate (%)	76.7	68.8	72.8	76.3	67.8	72.1	74.8	65.1	69.9
All unemployed									
- number	171	82	253	1,563	1,013	2,576	13,541	8,665	22,206
- rate (%)	4.7	2.3	3.5	4.7	3.0	3.8	4.8	3.0	3.9
Economically inactive									
- number	841	1,126	1,967	7,965	10,864	18,829	71,240	99,505	170,745
- rate (%)	23.3	31.2	27.2	23.7	32.2	27.9	25.2	34.9	30.1

Table KS601EW KS602EW and KS603EW

Hours worked	% of people aged 16-74 in employment					
	Full time (more than 30 hrs)			Part time (30 hrs or less)		
	This Area	High Peak	Derbyshire	This Area	High Peak	Derbyshire
All	71.1	70.0	70.3	28.9	30.0	29.7
Males	86.9	85.6	86.5	13.1	14.4	13.5
Females	53.9	52.8	52.1	46.1	47.2	47.9

Table KS604EW

People travelling to work	This Area	High Peak	Derbyshire
- works mainly at or from home %	18.2	12.2	10.5
- by car or van %	58.2	59.4	65.6
- by public transport or taxi %	5.5	8.4	6.6
- by all other methods of travel %	18.2	20.0	17.4
Average distance travelled km	14.1	15.7	15.2

Table LC7101EW and QS702EW

2011 Census: Summary Profile

New Mills

Area type and code
Parish (E04002855)

Workforce (continued)

Industry (people aged 16-74 in employment)	Number of workers	% of people aged 16-74 in employment		
		This Area	High Peak	Derbyshire
Agriculture, forestry and fishing	39	0.8	1.0	1.0
Mining, quarrying and utilities	46	0.9	2.0	1.9
Manufacturing	793	16.0	13.3	14.9
Construction	390	7.8	7.6	8.5
Wholesale and retail	626	12.6	14.4	16.6
Business services	1,366	27.5	27.4	25.1
Public services	1,464	29.5	29.6	27.5
Other services	245	4.9	4.7	4.5

Chart category

Other

Other

Manufacturing

Other

Services

Services

Services

Services

Table KS605EW

Occupation (people aged 16-74 in employment)	Number of workers	% of people aged 16-74 in employment		
		This Area	High Peak	Derbyshire
Managers, directors & senior officials	516	10.4	11.3	10.9
Professional	893	18.0	17.8	15.1
Associate professional & technical	572	11.5	11.7	11.0
Administrative & secretarial	518	10.4	10.1	10.9
Skilled trades	613	12.3	12.6	13.3
Caring, leisure & other services	539	10.8	10.0	9.6
Sales & customer service	329	6.6	7.0	7.9
Process, plant & machine operatives	498	10.0	9.0	9.6
Elementary occupations	491	9.9	10.4	11.7

Chart category

Managerial & professional

Managerial & professional

Managerial & professional

Other non-manual

Manual

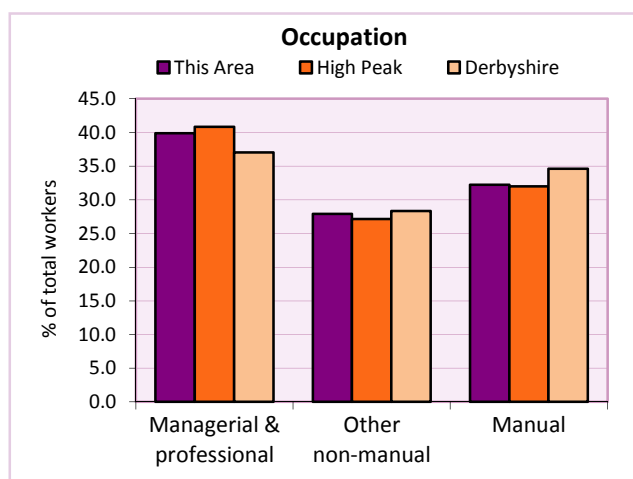
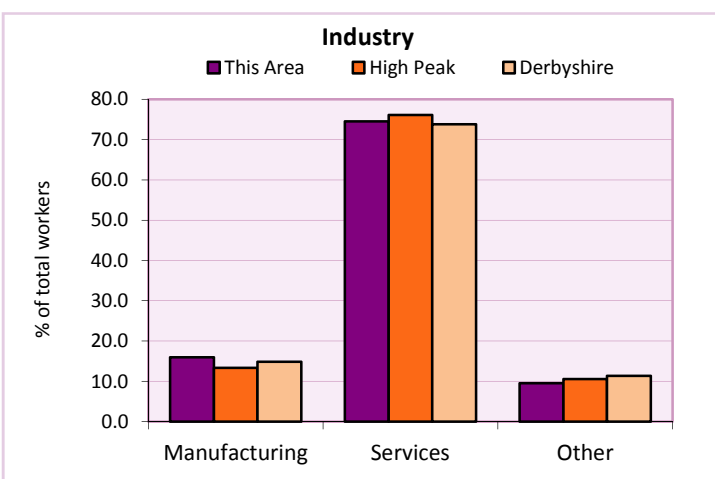
Other non-manual

Other non-manual

Manual

Manual

Table KS608EW



For an **explanation** of the various terms used in these tables, please see the accompanying **Glossary**.

Extension profiles covering the following topics in more detail will also be available:

Population, Economic Activity, Equalities, Health, Households, and Housing.

Profiles in Adobe Acrobat (pdf) format can be downloaded from the Derbyshire Observatory web site, which also provides interactive maps and charts - <http://observatory.derbyshire.gov.uk>

Please note that figures vary across the Census Profiles as different denominators are used. 2011 Census Table reference numbers are provided beneath each individual table in the Census Profiles should you require further information.

Version: 6.31