

Tintwistle

Area type and code
Parish (E04002858)

Population

Population change since 2001

Change in numbers	% change		
	This Area	High Peak	Derbyshire
-1	-0.1	+1.6	+4.8

2011 Census Table KS101EW and 2001 Census Table S001

Residents

	Number
Total resident population	1,400
- in households	1,393
- in communal establishments	7

Table KS101EW

Density of population

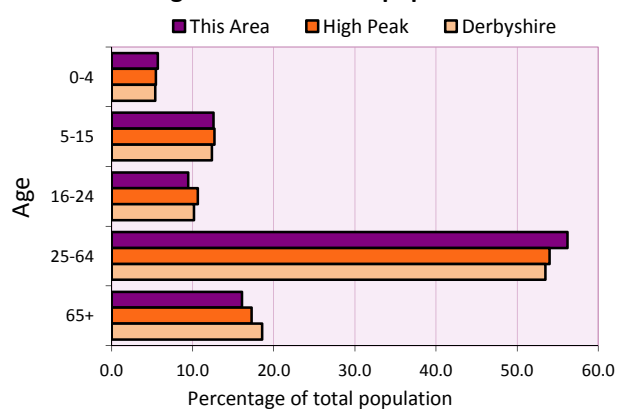
Area (hectares)	Persons per hectare		
	This Area	High Peak	Derbyshire
4,786	0.3	1.7	3.0

Table KS101EW

Age structure	Number of people	% of total population		
		This Area	High Peak	Derbyshire
0-4 years	80	5.7	5.5	5.4
5-15 years	176	12.6	12.7	12.4
16-24 years	132	9.4	10.6	10.2
25-64 years	787	56.2	54.0	53.5
65 and over	225	16.1	17.2	18.6

Table KS102EW

Age structure of the population



Households

Total households

Number	Average household size (persons)		
	This Area	High Peak	Derbyshire
628	2.23	2.33	2.31

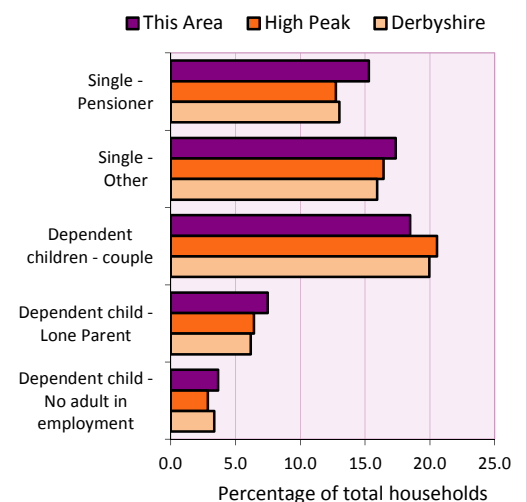
Table KS101EW and KS403EW

Household types

Household types	Number	% of total households		
		This Area	High Peak	Derbyshire
Single person households	205	32.6	29.2	28.9
Pensioner	96	15.3	12.7	13.0
Other	109	17.4	16.4	15.9
Households with dependent children				
All	172	27.4	28.4	27.6
Couple	116	18.5	20.5	19.9
Lone parent	47	7.5	6.4	6.2
No adult in employment	23	3.7	2.9	3.4
One person with a long-term health problem - or disability	26	4.1	4.4	4.5

Table KS105EW and KS106EW

Household types



Car/van ownership

Number of households	% of total households			
	This Area	High Peak	Derbyshire	
No car or van	127	20.2	19.6	20.1

Table KS404EW

2011 Census: Summary Profile

Tintwistle

Area type and code
Parish (E04002858)

Accommodation

Tenure	Number of households	% of total households		
		This Area	High Peak	Derbyshire
Owner-occupied	420	66.9	72.6	71.4
Rented from council/housing association	114	18.2	12.7	15.3
Private/other rented	87	13.9	13.4	12.0
Living rent free	7	1.1	1.2	1.3

Table KS402EW

Amenities	Number of households	% of total households		
		This Area	High Peak	Derbyshire
Overcrowded households	21	3.3	4.8	3.7
Households without central heating	29	4.6	2.3	2.0

Table KS403EW

Total household spaces	663
-------------------------------	------------

Table KS401EW

Type of accommodation	Number of household spaces	% of total household spaces		
		This Area	High Peak	Derbyshire
Detached	77	11.6	23.5	31.8
Semi-detached	221	33.3	29.2	38.7
Terraced	336	50.7	34.4	20.6
Flat/maisonette/apartment	29	4.4	12.6	8.6
Other	0	0.0	0.2	0.3

Table KS401EW

Marital status

Marital status	Number of people	% of people aged 16+		
		This Area	High Peak	Derbyshire
Single	372	32.5	30.9	29.3
Married	503	44.0	49.1	50.5
Same-sex civil partnership	11	1.0	0.2	0.2
Separated	40	3.5	2.4	2.4
Divorced	116	10.1	9.9	9.9
Widowed / surviving partner	102	8.9	7.4	7.7

Table KS103EW

Health

Health	Number of people	% of total population		
		This Area	High Peak	Derbyshire
People whose day-to-day activities are limited	263	18.8	18.1	20.4
People with 'bad' general health	78	5.6	5.2	6.2
People providing unpaid care	161	11.5	11.3	12.1

Table KS301EW

2011 Census: Summary Profile

Tintwistle

Area type and code
Parish (E04002858)

Ethnicity

Ethnic group	Number of people	% of total population		
		This Area	High Peak	Derbyshire
White British	1,331	95.1	95.9	95.8
Black and Minority Ethnic (BME)	69	4.9	4.1	4.2
White Other	34	2.4	2.0	1.7
Mixed/multiple ethnic groups	27	1.9	1.0	0.9
Asian/Asian British	3	0.2	0.8	1.1
Black/African/Caribbean/Black British	3	0.2	0.2	0.4
Other ethnic group	2	0.1	0.1	0.1

Table KS201EW

Religion

Religion	Number of people	% of total population		
		This Area	High Peak	Derbyshire
Christian	941	67.2	64.1	63.6
Buddhist	2	0.1	0.3	0.2
Hindu	0	0.0	0.1	0.2
Jewish	1	0.1	0.0	0.0
Muslim	1	0.1	0.2	0.3
Sikh	0	0.0	0.0	0.3
Other religions	11	0.8	0.4	0.4
No religion	357	25.5	27.6	28.0
Not stated	87	6.2	7.2	7.0

Table KS209EW

Migration

Country of birth by year of arrival in the UK	Number of people	% of total residents		
		This Area	High Peak	Derbyshire
From within the UK total	1,362	97.3	96.4	96.7
From outside the UK total	38	2.7	3.6	3.3
<i>of which</i>				
- Ireland	2	0.1	0.5	0.3
- Other EU country	14	1.0	0.8	0.9
- European (Non-EU country)	9	0.6	0.2	0.1
- Other parts of the world	13	0.9	1.7	1.6

Table LC2804EW

Length of residence in the UK	Number of people	% of total residents		
		This Area	High Peak	Derbyshire
Less than 2 years	1	0.1	0.2	0.3
2 years or more but less than 5 years	6	0.4	0.5	0.5
5 years or more but less than 10 years	5	0.4	0.6	0.6
10 years or more	26	1.9	2.2	2.0
Born in the UK	1,362	97.3	96.4	96.7

Table QS803EW

2011 Census: Summary Profile

Tintwistle

Area type and code
Parish (E04002858)

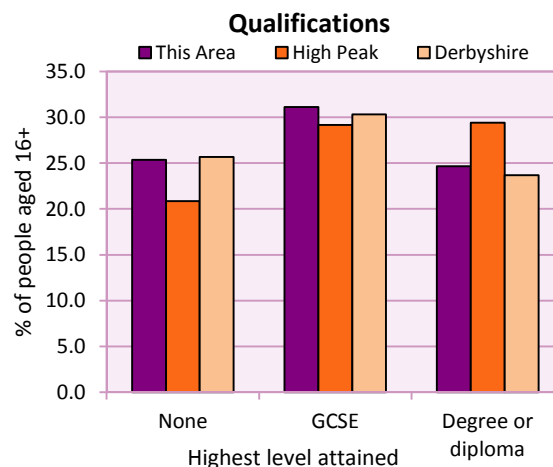
Education

Full-time students	Number	% of population in age group		
		This Area	High Peak	Derbyshire
aged 16-17	27	93.1	88.0	86.3
aged 18-74	34	3.3	3.9	2.9

Table KS501EW

Qualifications	People (aged 16+)	% of all people aged 16+		
		This Area	High Peak	Derbyshire
No qualifications	290	25.3	20.9	25.7
Highest level attained				
GCSE	356	31.1	29.2	30.3
Degree or diploma	282	24.7	29.4	23.7

Table KS501EW



Workforce

Economic activity	People aged 16-74								
	This Area			High Peak			Derbyshire		
	Males	Females	All	Males	Females	All	Males	Females	All
Economically active									
- number	388	336	724	25,645	22,915	48,560	211,349	185,704	397,053
- rate (%)	75.3	63.3	69.2	76.3	67.8	72.1	74.8	65.1	69.9
All unemployed									
- number	21	21	42	1,563	1,013	2,576	13,541	8,665	22,206
- rate (%)	4.1	4.0	4.0	4.7	3.0	3.8	4.8	3.0	3.9
Economically inactive									
- number	127	195	322	7,965	10,864	18,829	71,240	99,505	170,745
- rate (%)	24.7	36.7	30.8	23.7	32.2	27.9	25.2	34.9	30.1

Table KS601EW KS602EW and KS603EW

Hours worked	% of people aged 16-74 in employment					
	Full time (more than 30 hrs)			Part time (30 hrs or less)		
	This Area	High Peak	Derbyshire	This Area	High Peak	Derbyshire
All	73.4	70.0	70.3	26.6	30.0	29.7
Males	88.3	85.6	86.5	11.7	14.4	13.5
Females	56.2	52.8	52.1	43.8	47.2	47.9

Table KS604EW

People travelling to work	This Area	High Peak	Derbyshire
- works mainly at or from home %	22.4	12.2	10.5
- by car or van %	56.8	59.4	65.6
- by public transport or taxi %	4.9	8.4	6.6
- by all other methods of travel %	15.9	20.0	17.4
Average distance travelled km	15.8	15.7	15.2

Table LC7101EW and QS702EW

2011 Census: Summary Profile

Tintwistle

Area type and code
Parish (E04002858)

Workforce (continued)

Industry (people aged 16-74 in employment)	Number of workers	% of people aged 16-74 in employment		
		This Area	High Peak	Derbyshire
Agriculture, forestry and fishing	10	1.5	1.0	1.0
Mining, quarrying and utilities	9	1.3	2.0	1.9
Manufacturing	115	16.9	13.3	14.9
Construction	59	8.7	7.6	8.5
Wholesale and retail	118	17.3	14.4	16.6
Business services	151	22.2	27.4	25.1
Public services	198	29.1	29.6	27.5
Other services	21	3.1	4.7	4.5

Chart category

Other

Other

Manufacturing

Other

Services

Services

Services

Services

Table KS605EW

Occupation (people aged 16-74 in employment)	Number of workers	% of people aged 16-74 in employment		
		This Area	High Peak	Derbyshire
Managers, directors & senior officials	77	11.3	11.3	10.9
Professional	114	16.7	17.8	15.1
Associate professional & technical	80	11.7	11.7	11.0
Administrative & secretarial	70	10.3	10.1	10.9
Skilled trades	97	14.2	12.6	13.3
Caring, leisure & other services	53	7.8	10.0	9.6
Sales & customer service	52	7.6	7.0	7.9
Process, plant & machine operatives	50	7.3	9.0	9.6
Elementary occupations	88	12.9	10.4	11.7

Chart category

Managerial & professional

Managerial & professional

Managerial & professional

Other non-manual

Manual

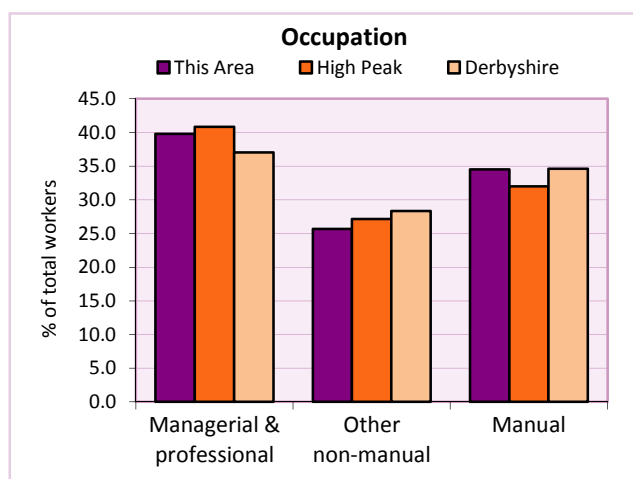
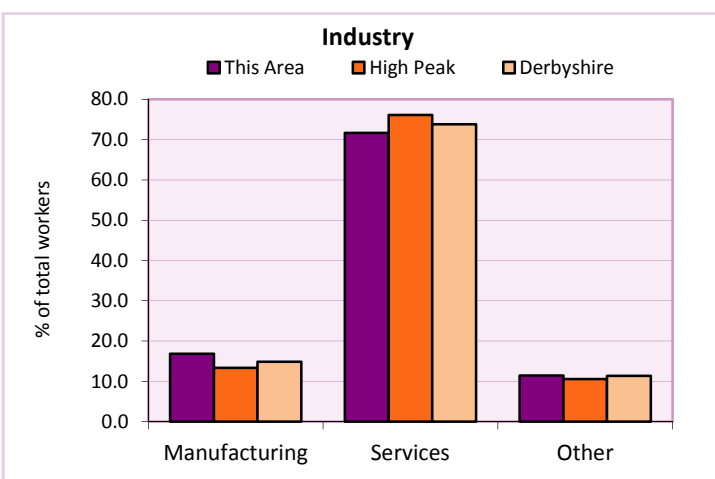
Other non-manual

Other non-manual

Manual

Manual

Table KS608EW



For an **explanation** of the various terms used in these tables, please see the accompanying **Glossary**.

Extension profiles covering the following topics in more detail will also be available:

Population, Economic Activity, Equalities, Health, Households, and Housing.

Profiles in Adobe Acrobat (pdf) format can be downloaded from the Derbyshire Observatory web site, which also provides interactive maps and charts - <http://observatory.derbyshire.gov.uk>

Please note that figures vary across the Census Profiles as different denominators are used. 2011 Census Table reference numbers are provided beneath each individual table in the Census Profiles should you require further information.

Version: 6.31