

## Whaley Bridge

Area type and code  
Parish (E04002859)

### Population

#### Population change since 2001

Change in numbers	% change		
	This Area	High Peak	Derbyshire
+227	+3.6	+1.6	+4.8

2011 Census Table KS101EW and 2001 Census Table S001

#### Residents

	Number
Total resident population	6,455
- in households	6,447
- in communal establishments	8

Table KS101EW

#### Density of population

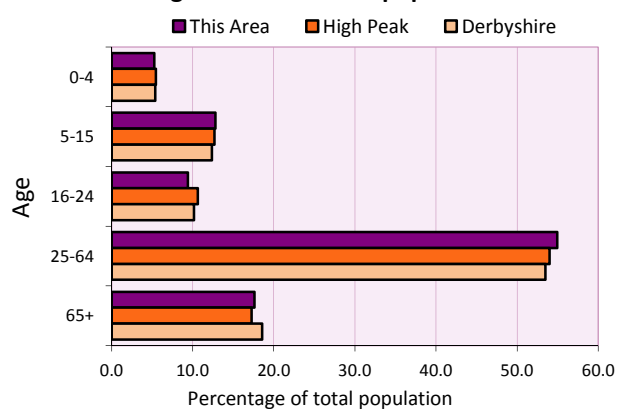
Area (hectares)	Persons per hectare		
	This Area	High Peak	Derbyshire
1,410	4.6	1.7	3.0

Table KS101EW

Age structure	Number of people	% of total population		
		This Area	High Peak	Derbyshire
0-4 years	339	5.3	5.5	5.4
5-15 years	827	12.8	12.7	12.4
16-24 years	608	9.4	10.6	10.2
25-64 years	3,545	54.9	54.0	53.5
65 and over	1,136	17.6	17.2	18.6

Table KS102EW

#### Age structure of the population



### Households

#### Total households

Number	Average household size (persons)		
	This Area	High Peak	Derbyshire
2,794	2.31	2.33	2.31

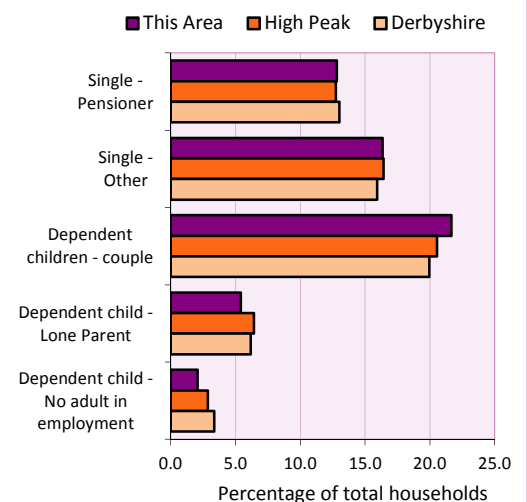
Table KS101EW and KS403EW

#### Household types

Household types	Number	% of total households		
		This Area	High Peak	Derbyshire
Single person households	815	29.2	29.2	28.9
Pensioner	358	12.8	12.7	13.0
Other	457	16.4	16.4	15.9
Households with dependent children				
All	785	28.1	28.4	27.6
Couple	605	21.7	20.5	19.9
Lone parent	151	5.4	6.4	6.2
No adult in employment	58	2.1	2.9	3.4
One person with a long-term health problem - or disability	103	3.7	4.4	4.5

Table KS105EW and KS106EW

#### Household types



#### Car/van ownership

Number of households	% of total households			
	This Area	High Peak	Derbyshire	
No car or van	402	14.4	19.6	20.1

Table KS404EW

# 2011 Census: Summary Profile

## Whaley Bridge

Area type and code  
Parish (E04002859)

### Accommodation

Tenure	Number of households	% of total households		
		This Area	High Peak	Derbyshire
Owner-occupied	2,144	76.7	72.6	71.4
Rented from council/housing association	244	8.7	12.7	15.3
Private/other rented	371	13.3	13.4	12.0
Living rent free	35	1.3	1.2	1.3

Table KS402EW

Amenities	Number of households	% of total households		
		This Area	High Peak	Derbyshire
Overcrowded households	89	3.2	4.8	3.7
Households without central heating	58	2.1	2.3	2.0

Table KS403EW

<b>Total household spaces</b>	<b>2,928</b>
-------------------------------	--------------

Table KS401EW

Type of accommodation	Number of household spaces	% of total household spaces		
		This Area	High Peak	Derbyshire
Detached	970	33.1	23.5	31.8
Semi-detached	817	27.9	29.2	38.7
Terraced	892	30.5	34.4	20.6
Flat/maisonette/apartment	249	8.5	12.6	8.6
Other	0	0.0	0.2	0.3

Table KS401EW

### Marital status

Marital status	Number of people	% of people aged 16+		
		This Area	High Peak	Derbyshire
Single	1,442	27.3	30.9	29.3
Married	2,810	53.1	49.1	50.5
Same-sex civil partnership	12	0.2	0.2	0.2
Separated	151	2.9	2.4	2.4
Divorced	509	9.6	9.9	9.9
Widowed / surviving partner	365	6.9	7.4	7.7

Table KS103EW

### Health

Health	Number of people	% of total population		
		This Area	High Peak	Derbyshire
People whose day-to-day activities are limited	1,045	16.2	18.1	20.4
People with 'bad' general health	265	4.1	5.2	6.2
People providing unpaid care	792	12.3	11.3	12.1

Table KS301EW

# 2011 Census: Summary Profile

## Whaley Bridge

Area type and code  
Parish (E04002859)

### Ethnicity

Ethnic group	Number of people	% of total population		
		This Area	High Peak	Derbyshire
White British	6,246	96.8	95.9	95.8
Black and Minority Ethnic (BME)	209	3.2	4.1	4.2
White Other	121	1.9	2.0	1.7
Mixed/multiple ethnic groups	44	0.7	1.0	0.9
Asian/Asian British	34	0.5	0.8	1.1
Black/African/Caribbean/Black British	3	0.0	0.2	0.4
Other ethnic group	7	0.1	0.1	0.1

Table KS201EW

### Religion

Religion	Number of people	% of total population		
		This Area	High Peak	Derbyshire
Christian	4,081	63.2	64.1	63.6
Buddhist	23	0.4	0.3	0.2
Hindu	5	0.1	0.1	0.2
Jewish	7	0.1	0.0	0.0
Muslim	3	0.0	0.2	0.3
Sikh	0	0.0	0.0	0.3
Other religions	26	0.4	0.4	0.4
No religion	1,807	28.0	27.6	28.0
Not stated	503	7.8	7.2	7.0

Table KS209EW

### Migration

Country of birth by year of arrival in the UK	Number of people	% of total residents		
		This Area	High Peak	Derbyshire
From within the UK total	6,242	96.7	96.4	96.7
From outside the UK total	213	3.3	3.6	3.3
<i>of which</i>				
- Ireland	21	0.3	0.5	0.3
- Other EU country	46	0.7	0.8	0.9
- European (Non-EU country)	36	0.6	0.2	0.1
- Other parts of the world	110	1.7	1.7	1.6

Table LC2804EW

Length of residence in the UK	Number of people	% of total residents		
		This Area	High Peak	Derbyshire
Less than 2 years	12	0.2	0.2	0.3
2 years or more but less than 5 years	17	0.3	0.5	0.5
5 years or more but less than 10 years	34	0.5	0.6	0.6
10 years or more	150	2.3	2.2	2.0
Born in the UK	6,242	96.7	96.4	96.7

Table QS803EW

# 2011 Census: Summary Profile

## Whaley Bridge

Area type and code  
Parish (E04002859)

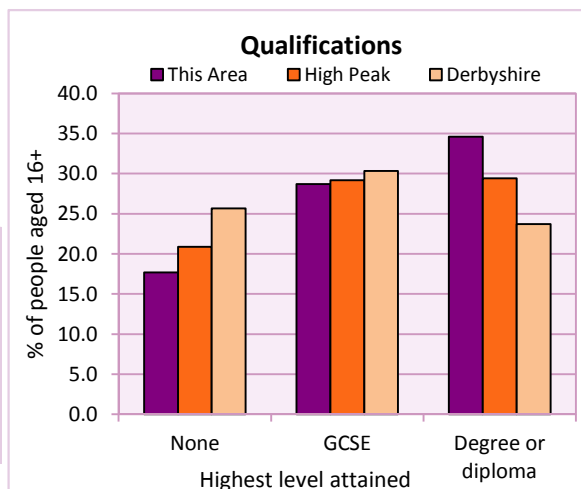
### Education

Full-time students	Number	% of population in age group		
		This Area	High Peak	Derbyshire
aged 16-17	154	88.5	88.0	86.3
aged 18-74	136	2.9	3.9	2.9

Table KS501EW

Qualifications	People (aged 16+)	% of all people aged 16+		
		This Area	High Peak	Derbyshire
No qualifications	935	17.7	20.9	25.7
Highest level attained				
GCSE	1,518	28.7	29.2	30.3
Degree or diploma	1,829	34.6	29.4	23.7

Table KS501EW



### Workforce

Economic activity	People aged 16-74								
	This Area			High Peak			Derbyshire		
	Males	Females	All	Males	Females	All	Males	Females	All
Economically active									
- number	1,879	1,654	3,533	25,645	22,915	48,560	211,349	185,704	397,053
- rate (%)	77.9	68.8	73.4	76.3	67.8	72.1	74.8	65.1	69.9
All unemployed									
- number	95	66	161	1,563	1,013	2,576	13,541	8,665	22,206
- rate (%)	3.9	2.7	3.3	4.7	3.0	3.8	4.8	3.0	3.9
Economically inactive									
- number	532	750	1,282	7,965	10,864	18,829	71,240	99,505	170,745
- rate (%)	22.1	31.2	26.6	23.7	32.2	27.9	25.2	34.9	30.1

Table KS601EW KS602EW and KS603EW

Hours worked	% of people aged 16-74 in employment					
	Full time (more than 30 hrs)			Part time (30 hrs or less)		
	This Area	High Peak	Derbyshire	This Area	High Peak	Derbyshire
All	68.8	70.0	70.3	31.2	30.0	29.7
Males	84.9	85.6	86.5	15.1	14.4	13.5
Females	50.8	52.8	52.1	49.2	47.2	47.9

Table KS604EW

People travelling to work	This Area	High Peak	Derbyshire
- works mainly at or from home %	23.9	12.2	10.5
- by car or van %	59.7	59.4	65.6
- by public transport or taxi %	3.0	8.4	6.6
- by all other methods of travel %	13.4	20.0	17.4
Average distance travelled km	18.1	15.7	15.2

Table LC7101EW and QS702EW

# 2011 Census: Summary Profile

## Whaley Bridge

Area type and code  
Parish (E04002859)

### Workforce (continued)

Industry (people aged 16-74 in employment)	Number of workers	% of people aged 16-74 in employment		
		This Area	High Peak	Derbyshire
Agriculture, forestry and fishing	39	1.2	1.0	1.0
Mining, quarrying and utilities	31	0.9	2.0	1.9
Manufacturing	481	14.3	13.3	14.9
Construction	271	8.1	7.6	8.5
Wholesale and retail	471	14.0	14.4	16.6
Business services	952	28.3	27.4	25.1
Public services	961	28.6	29.6	27.5
Other services	155	4.6	4.7	4.5

#### Chart category

Other

Other

Manufacturing

Other

Services

Services

Services

Services

Table KS605EW

Occupation (people aged 16-74 in employment)	Number of workers	% of people aged 16-74 in employment		
		This Area	High Peak	Derbyshire
Managers, directors & senior officials	413	12.3	11.3	10.9
Professional	664	19.8	17.8	15.1
Associate professional & technical	417	12.4	11.7	11.0
Administrative & secretarial	338	10.1	10.1	10.9
Skilled trades	407	12.1	12.6	13.3
Caring, leisure & other services	300	8.9	10.0	9.6
Sales & customer service	220	6.5	7.0	7.9
Process, plant & machine operatives	263	7.8	9.0	9.6
Elementary occupations	339	10.1	10.4	11.7

#### Chart category

Managerial & professional

Managerial & professional

Managerial & professional

Other non-manual

Manual

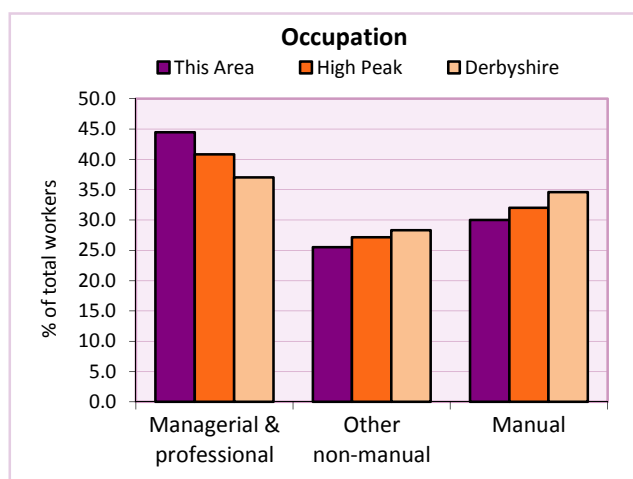
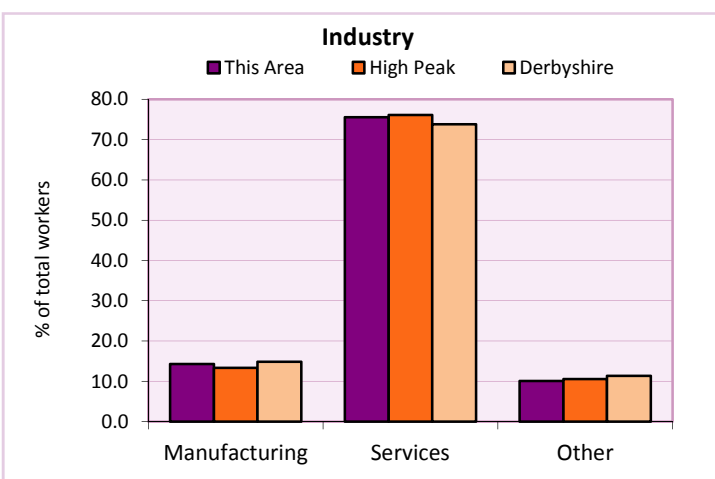
Other non-manual

Other non-manual

Manual

Manual

Table KS608EW



For an **explanation** of the various terms used in these tables, please see the accompanying **Glossary**.

**Extension profiles** covering the following topics in more detail will also be available:

**Population, Economic Activity, Equalities, Health, Households, and Housing.**

**Profiles** in Adobe Acrobat (pdf) format can be downloaded from the Derbyshire Observatory web site, which also provides interactive maps and charts - <http://observatory.derbyshire.gov.uk>

**Please note that figures vary across the Census Profiles as different denominators are used. 2011 Census Table reference numbers are provided beneath each individual table in the Census Profiles should you require further information.**

Version: 6.31