

Wormhill

Area type and code
Parish (E04002860)

Population

Population change since 2001

Change in numbers	% change		
	This Area	High Peak	Derbyshire
-65	-6.0	+1.6	+4.8

2011 Census Table KS101EW and 2001 Census Table S001

Residents

	Number
Total resident population	1,020
- in households	1,018
- in communal establishments	2

Table KS101EW

Density of population

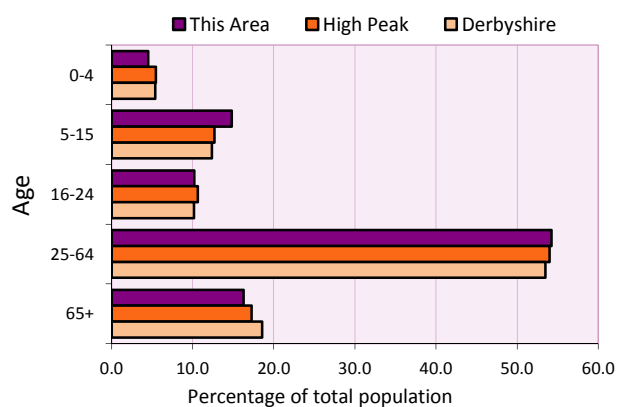
Area (hectares)	Persons per hectare		
	This Area	High Peak	Derbyshire
1,911	0.5	1.7	3.0

Table KS101EW

Age structure	Number of people	% of total population		
		This Area	High Peak	Derbyshire
0-4 years	46	4.5	5.5	5.4
5-15 years	151	14.8	12.7	12.4
16-24 years	104	10.2	10.6	10.2
25-64 years	553	54.2	54.0	53.5
65 and over	166	16.3	17.2	18.6

Table KS102EW

Age structure of the population



Households

Total households

Number	Average household size (persons)		
	This Area	High Peak	Derbyshire
428	2.38	2.33	2.31

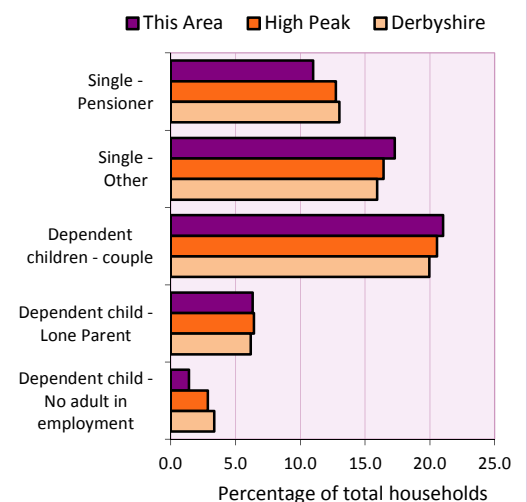
Table KS101EW and KS403EW

Household types

Household types	Number	% of total households		
		This Area	High Peak	Derbyshire
Single person households	121	28.3	29.2	28.9
Pensioner	47	11.0	12.7	13.0
Other	74	17.3	16.4	15.9
Households with dependent children				
All	122	28.5	28.4	27.6
Couple	90	21.0	20.5	19.9
Lone parent	27	6.3	6.4	6.2
No adult in employment	6	1.4	2.9	3.4
One person with a long-term health problem - or disability	20	4.7	4.4	4.5

Table KS105EW and KS106EW

Household types



Car/van ownership

Number of households	% of total households			
	This Area	High Peak	Derbyshire	
No car or van	47	11.0	19.6	20.1

Table KS404EW

2011 Census: Summary Profile

Wormhill

Area type and code
Parish (E04002860)

Accommodation

Tenure	Number of households	% of total households		
		This Area	High Peak	Derbyshire
Owner-occupied	322	75.2	72.6	71.4
Rented from council/housing association	40	9.3	12.7	15.3
Private/other rented	61	14.3	13.4	12.0
Living rent free	5	1.2	1.2	1.3

Table KS402EW

Amenities	Number of households	% of total households		
		This Area	High Peak	Derbyshire
Overcrowded households	21	4.9	4.8	3.7
Households without central heating	21	4.9	2.3	2.0

Table KS403EW

Total household spaces	449
-------------------------------	------------

Table KS401EW

Type of accommodation	Number of household spaces	% of total household spaces		
		This Area	High Peak	Derbyshire
Detached	104	23.2	23.5	31.8
Semi-detached	117	26.1	29.2	38.7
Terraced	201	44.8	34.4	20.6
Flat/maisonette/apartment	27	6.0	12.6	8.6
Other	0	0.0	0.2	0.3

Table KS401EW

Marital status

Marital status	Number of people	% of people aged 16+		
		This Area	High Peak	Derbyshire
Single	259	31.5	30.9	29.3
Married	409	49.7	49.1	50.5
Same-sex civil partnership	0	0.0	0.2	0.2
Separated	12	1.5	2.4	2.4
Divorced	89	10.8	9.9	9.9
Widowed / surviving partner	54	6.6	7.4	7.7

Table KS103EW

Health

Health	Number of people	% of total population		
		This Area	High Peak	Derbyshire
People whose day-to-day activities are limited	167	16.4	18.1	20.4
People with 'bad' general health	45	4.4	5.2	6.2
People providing unpaid care	129	12.6	11.3	12.1

Table KS301EW

2011 Census: Summary Profile

Wormhill

Area type and code
Parish (E04002860)

Ethnicity

Ethnic group	Number of people	% of total population		
		This Area	High Peak	Derbyshire
White British	998	97.8	95.9	95.8
Black and Minority Ethnic (BME)	22	2.2	4.1	4.2
White Other	11	1.1	2.0	1.7
Mixed/multiple ethnic groups	6	0.6	1.0	0.9
Asian/Asian British	5	0.5	0.8	1.1
Black/African/Caribbean/Black British	0	0.0	0.2	0.4
Other ethnic group	0	0.0	0.1	0.1

Table KS201EW

Religion

Religion	Number of people	% of total population		
		This Area	High Peak	Derbyshire
Christian	666	65.3	64.1	63.6
Buddhist	5	0.5	0.3	0.2
Hindu	0	0.0	0.1	0.2
Jewish	0	0.0	0.0	0.0
Muslim	2	0.2	0.2	0.3
Sikh	0	0.0	0.0	0.3
Other religions	2	0.2	0.4	0.4
No religion	279	27.4	27.6	28.0
Not stated	66	6.5	7.2	7.0

Table KS209EW

Migration

Country of birth by year of arrival in the UK	Number of people	% of total residents		
		This Area	High Peak	Derbyshire
From within the UK total	999	97.9	96.4	96.7
From outside the UK total	21	2.1	3.6	3.3
<i>of which</i>				
- Ireland	6	0.6	0.5	0.3
- Other EU country	0	0.0	0.8	0.9
- European (Non-EU country)	7	0.7	0.2	0.1
- Other parts of the world	8	0.8	1.7	1.6

Table LC2804EW

Length of residence in the UK	Number of people	% of total residents		
		This Area	High Peak	Derbyshire
Less than 2 years	0	0.0	0.2	0.3
2 years or more but less than 5 years	1	0.1	0.5	0.5
5 years or more but less than 10 years	2	0.2	0.6	0.6
10 years or more	18	1.8	2.2	2.0
Born in the UK	999	97.9	96.4	96.7

Table QS803EW

2011 Census: Summary Profile

Wormhill

Area type and code
Parish (E04002860)

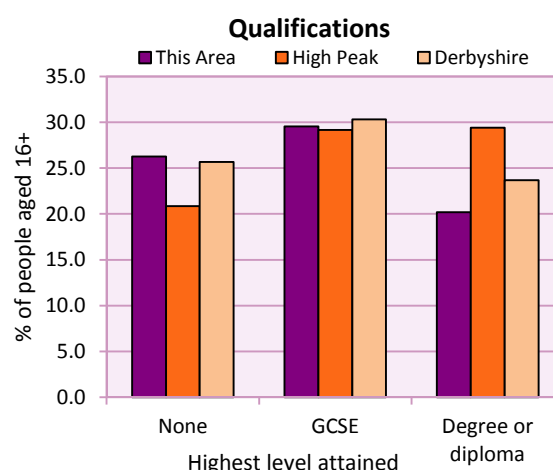
Education

Full-time students	Number	% of population in age group		
		This Area	High Peak	Derbyshire
aged 16-17	15	71.4	88.0	86.3
aged 18-74	31	4.2	3.9	2.9

Table KS501EW

Qualifications	People (aged 16+)	% of all people aged 16+		
		This Area	High Peak	Derbyshire
No qualifications	216	26.2	20.9	25.7
Highest level attained				
GCSE	243	29.5	29.2	30.3
Degree or diploma	166	20.2	29.4	23.7

Table KS501EW



Workforce

Economic activity	People aged 16-74								
	This Area			High Peak			Derbyshire		
	Males	Females	All	Males	Females	All	Males	Females	All
Economically active									
- number	325	258	583	25,645	22,915	48,560	211,349	185,704	397,053
- rate (%)	81.3	71.3	76.5	76.3	67.8	72.1	74.8	65.1	69.9
All unemployed									
- number	15	12	27	1,563	1,013	2,576	13,541	8,665	22,206
- rate (%)	3.8	3.3	3.5	4.7	3.0	3.8	4.8	3.0	3.9
Economically inactive									
- number	75	104	179	7,965	10,864	18,829	71,240	99,505	170,745
- rate (%)	18.8	28.7	23.5	23.7	32.2	27.9	25.2	34.9	30.1

Table KS601EW KS602EW and KS603EW

Hours worked	% of people aged 16-74 in employment					
	Full time (more than 30 hrs)			Part time (30 hrs or less)		
	This Area	High Peak	Derbyshire	This Area	High Peak	Derbyshire
All	68.5	70.0	70.3	31.5	30.0	29.7
Males	86.5	85.6	86.5	13.5	14.4	13.5
Females	46.3	52.8	52.1	53.7	47.2	47.9

Table KS604EW

People travelling to work	This Area	High Peak	Derbyshire
- works mainly at or from home %	11.2	12.2	10.5
- by car or van %	57.8	59.4	65.6
- by public transport or taxi %	11.3	8.4	6.6
- by all other methods of travel %	19.8	20.0	17.4
Average distance travelled km	13.1	15.7	15.2

Table LC7101EW and QS702EW

2011 Census: Summary Profile

Wormhill

Area type and code
Parish (E04002860)

Workforce (continued)

Industry (people aged 16-74 in employment)	Number of workers	% of people aged 16-74 in employment		
		This Area	High Peak	Derbyshire
Agriculture, forestry and fishing	26	4.7	1.0	1.0
Mining, quarrying and utilities	22	4.0	2.0	1.9
Manufacturing	81	14.7	13.3	14.9
Construction	40	7.3	7.6	8.5
Wholesale and retail	67	12.2	14.4	16.6
Business services	173	31.5	27.4	25.1
Public services	112	20.4	29.6	27.5
Other services	29	5.3	4.7	4.5

Chart category

Other

Other

Manufacturing

Other

Services

Services

Services

Services

Table KS605EW

Occupation (people aged 16-74 in employment)	Number of workers	% of people aged 16-74 in employment		
		This Area	High Peak	Derbyshire
Managers, directors & senior officials	50	9.1	11.3	10.9
Professional	62	11.3	17.8	15.1
Associate professional & technical	49	8.9	11.7	11.0
Administrative & secretarial	50	9.1	10.1	10.9
Skilled trades	93	16.9	12.6	13.3
Caring, leisure & other services	47	8.5	10.0	9.6
Sales & customer service	35	6.4	7.0	7.9
Process, plant & machine operatives	90	16.4	9.0	9.6
Elementary occupations	74	13.5	10.4	11.7

Chart category

Managerial & professional

Managerial & professional

Managerial & professional

Other non-manual

Manual

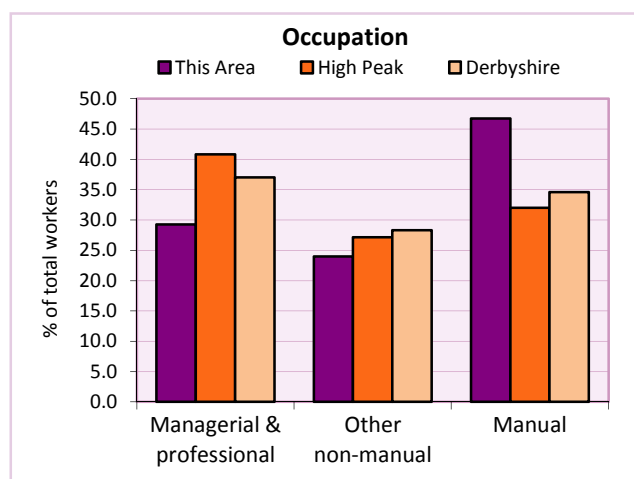
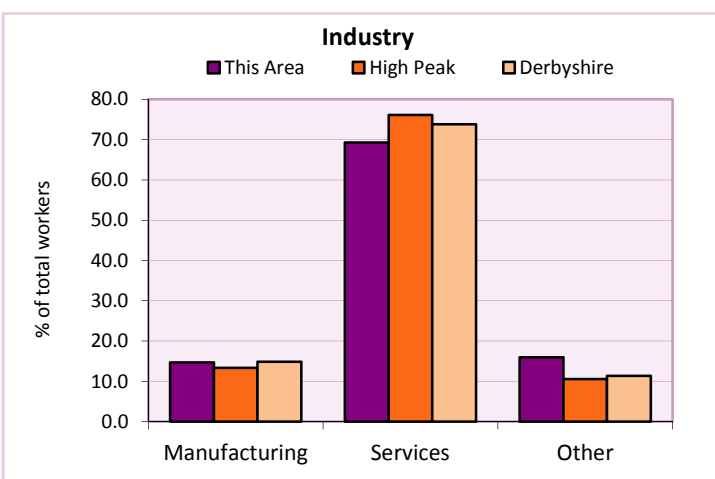
Other non-manual

Other non-manual

Manual

Manual

Table KS608EW



For an **explanation** of the various terms used in these tables, please see the accompanying **Glossary**.

Extension profiles covering the following topics in more detail will also be available:

Population, Economic Activity, Equalities, Health, Households, and Housing.

Profiles in Adobe Acrobat (pdf) format can be downloaded from the Derbyshire Observatory web site, which also provides interactive maps and charts - <http://observatory.derbyshire.gov.uk>

Please note that figures vary across the Census Profiles as different denominators are used. 2011 Census Table reference numbers are provided beneath each individual table in the Census Profiles should you require further information.

Version: 6.31