

Hartshorne

Area type and code
Parish (E04002906)

Population

Population change since 2001

Change in numbers	% change		
	This Area	S. Derbyshire	Derbyshire
+163	+4.4	+16.0	+4.8

2011 Census Table KS101EW and 2001 Census Table S001

Residents

	Number
Total resident population	3,888
- in households	3,843
- in communal establishments	45

Table KS101EW

Density of population

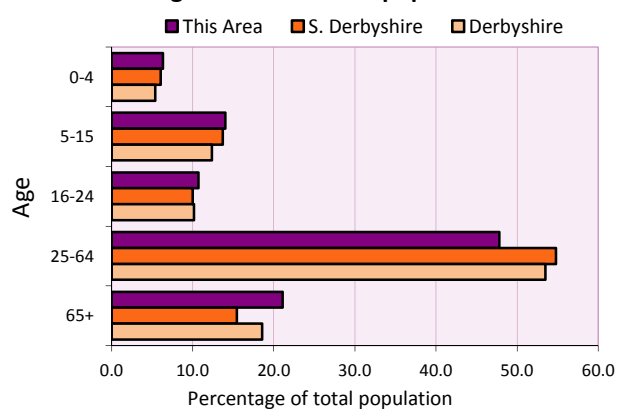
Area (hectares)	Persons per hectare		
	This Area	S. Derbyshire	Derbyshire
1,024	3.8	2.8	3.0

Table KS101EW

Age structure	Number of people	% of total population		
		This Area	S. Derbyshire	Derbyshire
0-4 years	246	6.3	6.1	5.4
5-15 years	546	14.0	13.7	12.4
16-24 years	417	10.7	10.0	10.2
25-64 years	1,859	47.8	54.8	53.5
65 and over	820	21.1	15.5	18.6

Table KS102EW

Age structure of the population



Households

Total households

Number	Average household size (persons)		
	This Area	S. Derbyshire	Derbyshire
1,585	2.45	2.43	2.31

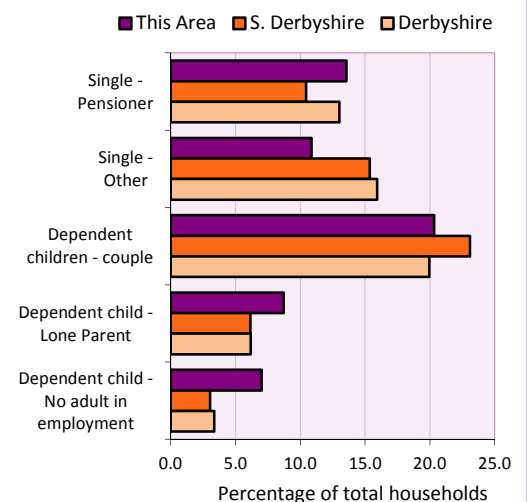
Table KS101EW and KS403EW

Household types

Household types	Number	% of total households		
		This Area	S. Derbyshire	Derbyshire
Single person households	387	24.4	25.8	28.9
Pensioner	215	13.6	10.4	13.0
Other	172	10.9	15.4	15.9
Households with dependent children				
All	489	30.9	30.9	27.6
Couple	322	20.3	23.1	19.9
Lone parent	138	8.7	6.1	6.2
No adult in employment	111	7.0	3.0	3.4
One person with a long-term health problem - or disability	100	6.3	4.6	4.5

Table KS105EW and KS106EW

Household types



Car/van ownership

Number of households	% of total households			
	This Area	S. Derbyshire	Derbyshire	
No car or van	350	22.1	13.5	20.1

Table KS404EW

2011 Census: Summary Profile

Hartshorne

Area type and code
Parish (E04002906)

Accommodation

Tenure	Number of households	% of total households		
		This Area	S. Derbyshire	Derbyshire
Owner-occupied	1,064	67.1	75.8	71.4
Rented from council/housing association	417	26.3	9.9	15.3
Private/other rented	89	5.6	13.0	12.0
Living rent free	15	0.9	1.2	1.3

Table KS402EW

Amenities	Number of households	% of total households		
		This Area	S. Derbyshire	Derbyshire
Overcrowded households	67	4.2	3.2	3.7
Households without central heating	24	1.5	2.0	2.0

Table KS403EW

Total household spaces	1,639
-------------------------------	--------------

Table KS401EW

Type of accommodation	Number of household spaces	% of total household spaces		
		This Area	S. Derbyshire	Derbyshire
Detached	526	32.1	39.8	31.8
Semi-detached	841	51.3	34.9	38.7
Terraced	217	13.2	18.1	20.6
Flat/maisonette/apartment	38	2.3	6.5	8.6
Other	17	1.0	0.7	0.3

Table KS401EW

Marital status

Marital status	Number of people	% of people aged 16+		
		This Area	S. Derbyshire	Derbyshire
Single	883	28.5	28.7	29.3
Married	1,607	51.9	52.7	50.5
Same-sex civil partnership	3	0.1	0.2	0.2
Separated	70	2.3	2.5	2.4
Divorced	253	8.2	9.4	9.9
Widowed / surviving partner	280	9.0	6.6	7.7

Table KS103EW

Health

Health	Number of people	% of total population		
		This Area	S. Derbyshire	Derbyshire
People whose day-to-day activities are limited	968	24.9	17.5	20.4
People with 'bad' general health	311	8.0	4.9	6.2
People providing unpaid care	506	13.0	11.1	12.1

Table KS301EW

2011 Census: Summary Profile

Hartshorne

Area type and code
Parish (E04002906)

Ethnicity

Ethnic group	Number of people	% of total population		
		This Area	S. Derbyshire	Derbyshire
White British	3,780	97.2	94.0	95.8
Black and Minority Ethnic (BME)	108	2.8	6.0	4.2
White Other	66	1.7	1.7	1.7
Mixed/multiple ethnic groups	16	0.4	1.1	0.9
Asian/Asian British	24	0.6	2.5	1.1
Black/African/Caribbean/Black British	1	0.0	0.4	0.4
Other ethnic group	1	0.0	0.1	0.1

Table KS201EW

Religion

Religion	Number of people	% of total population		
		This Area	S. Derbyshire	Derbyshire
Christian	2,397	61.7	64.0	63.6
Buddhist	6	0.2	0.2	0.2
Hindu	2	0.1	0.3	0.2
Jewish	0	0.0	0.0	0.0
Muslim	2	0.1	0.3	0.3
Sikh	4	0.1	1.5	0.3
Other religions	15	0.4	0.4	0.4
No religion	1,139	29.3	26.8	28.0
Not stated	323	8.3	6.6	7.0

Table KS209EW

Migration

Country of birth by year of arrival in the UK	Number of people	% of total residents		
		This Area	S. Derbyshire	Derbyshire
From within the UK total	3,788	97.4	96.1	96.7
From outside the UK total	100	2.6	3.9	3.3
<i>of which</i>				
- Ireland	10	0.3	0.3	0.3
- Other EU country	47	1.2	0.9	0.9
- European (Non-EU country)	17	0.4	0.2	0.1
- Other parts of the world	26	0.7	2.2	1.6

Table LC2804EW

Length of residence in the UK	Number of people	% of total residents		
		This Area	S. Derbyshire	Derbyshire
Less than 2 years	3	0.1	0.3	0.3
2 years or more but less than 5 years	20	0.5	0.4	0.5
5 years or more but less than 10 years	19	0.5	0.7	0.6
10 years or more	58	1.5	2.5	2.0
Born in the UK	3,788	97.4	96.1	96.7

Table QS803EW

2011 Census: Summary Profile

Hartshorne

Area type and code
Parish (E04002906)

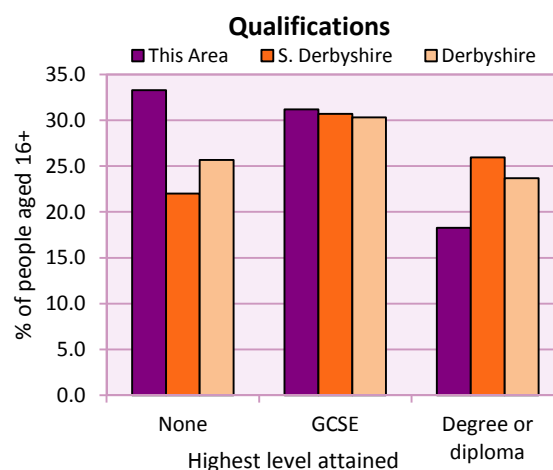
Education

Full-time students	Number	% of population in age group		
		This Area	S. Derbyshire	Derbyshire
aged 16-17	92	81.4	89.1	86.3
aged 18-74	71	2.7	3.0	2.9

Table KS501EW

Qualifications	People (aged 16+)	% of all people aged 16+		
		This Area	S. Derbyshire	Derbyshire
No qualifications	1,030	33.3	22.0	25.7
Highest level attained				
GCSE	965	31.2	30.7	30.3
Degree or diploma	566	18.3	26.0	23.7

Table KS501EW



Workforce

Economic activity	People aged 16-74								
	This Area			South Derbyshire			Derbyshire		
	Males	Females	All	Males	Females	All	Males	Females	All
Economically active									
- number	912	762	1,674	26,971	23,387	50,358	211,349	185,704	397,053
- rate (%)	67.9	55.2	61.5	78.0	67.1	72.5	74.8	65.1	69.9
All unemployed									
- number	77	50	127	1,236	889	2,125	13,541	8,665	22,206
- rate (%)	5.7	3.6	4.7	3.6	2.5	3.1	4.8	3.0	3.9
Economically inactive									
- number	432	618	1,050	7,615	11,477	19,092	71,240	99,505	170,745
- rate (%)	32.1	44.8	38.5	22.0	32.9	27.5	25.2	34.9	30.1

Table KS601EW KS602EW and KS603EW

Hours worked	% of people aged 16-74 in employment					
	Full time (more than 30 hrs)			Part time (30 hrs or less)		
	This Area	S. Derbyshire	Derbyshire	This Area	S. Derbyshire	Derbyshire
All	66.5	72.1	70.3	33.5	27.9	29.7
Males	84.7	88.4	86.5	15.3	11.6	13.5
Females	45.4	53.5	52.1	54.6	46.5	47.9

Table KS604EW

People travelling to work	This Area	S. Derbyshire	Derbyshire
- works mainly at or from home %	12.3	10.8	10.5
- by car or van %	73.5	71.5	65.6
- by public transport or taxi %	5.0	3.6	6.6
- by all other methods of travel %	9.1	14.2	17.4
Average distance travelled km	17.0	16.4	15.2

Table LC7101EW and QS702EW

2011 Census: Summary Profile

Hartshorne

Area type and code
Parish (E04002906)

Workforce (continued)

Industry (people aged 16-74 in employment)	Number of workers	% of people aged 16-74 in employment		
		This Area	S. Derbyshire	Derbyshire
Agriculture, forestry and fishing	17	1.1	1.2	1.0
Mining, quarrying and utilities	36	2.4	1.9	1.9
Manufacturing	250	16.4	17.1	14.9
Construction	125	8.2	7.8	8.5
Wholesale and retail	255	16.7	16.2	16.6
Business services	417	27.3	25.8	25.1
Public services	345	22.6	25.6	27.5
Other services	83	5.4	4.3	4.5

Chart category

Other

Other

Manufacturing

Other

Services

Services

Services

Services

Table KS605EW

Occupation (people aged 16-74 in employment)	Number of workers	% of people aged 16-74 in employment		
		This Area	S. Derbyshire	Derbyshire
Managers, directors & senior officials	176	11.5	12.1	10.9
Professional	198	13.0	16.1	15.1
Associate professional & technical	148	9.7	11.8	11.0
Administrative & secretarial	144	9.4	10.9	10.9
Skilled trades	179	11.7	12.4	13.3
Caring, leisure & other services	139	9.1	8.8	9.6
Sales & customer service	125	8.2	7.1	7.9
Process, plant & machine operatives	196	12.8	9.8	9.6
Elementary occupations	223	14.6	10.9	11.7

Chart category

Managerial & professional

Managerial & professional

Managerial & professional

Other non-manual

Manual

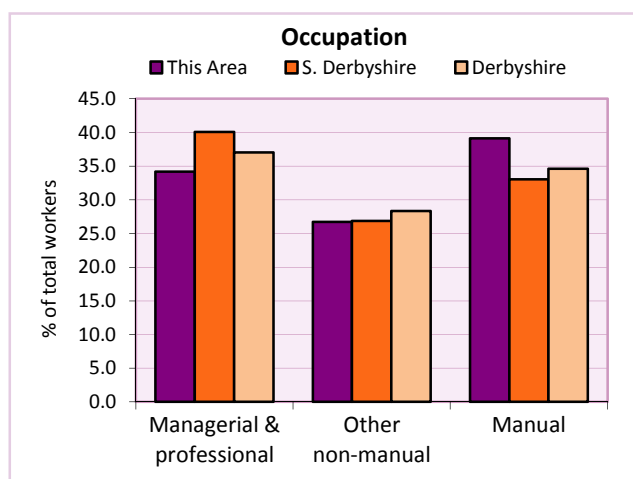
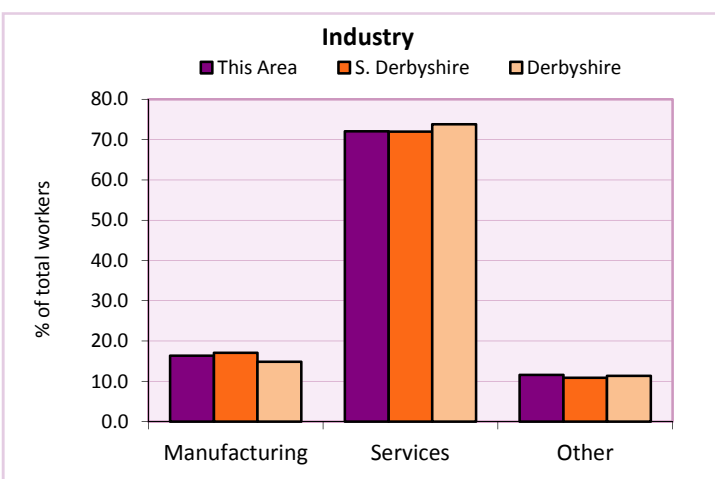
Other non-manual

Other non-manual

Manual

Manual

Table KS608EW



For an **explanation** of the various terms used in these tables, please see the accompanying **Glossary**.

Extension profiles covering the following topics in more detail will also be available:

Population, Economic Activity, Equalities, Health, Households, and Housing.

Profiles in Adobe Acrobat (pdf) format can be downloaded from the Derbyshire Observatory web site, which also provides interactive maps and charts - <http://observatory.derbyshire.gov.uk>

Please note that figures vary across the Census Profiles as different denominators are used. 2011 Census Table reference numbers are provided beneath each individual table in the Census Profiles should you require further information.

Version: 6.31